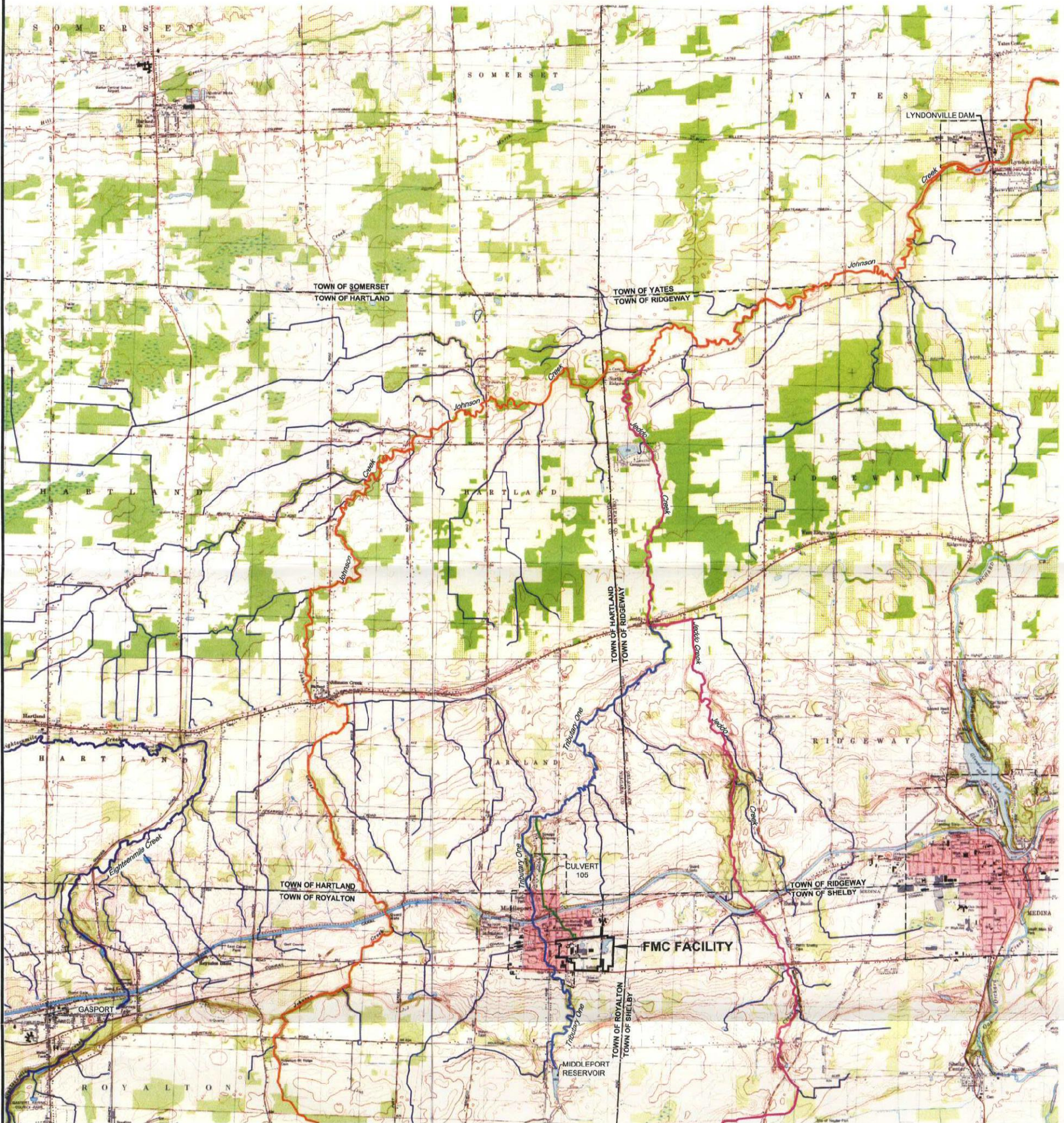


ARCADIS

Figures

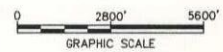


LEGEND:

- STREAM
- JOHNSON CREEK
- JEDDO CREEK
- EIGHTEENMILE CREEK
- TRIBUTARY ONE
- UNNAMED TRIBUTARIES
- CULVERT 105
- - - VILLAGE LINE
- - - TOWN LINE
- - - COUNTY LINE

SOURCE:

USGS BARKER, NEW YORK QUADRANGLE, 1980
 USGS GASPORT, NEW YORK QUADRANGLE, 1979
 USGS LYNDONVILLE, NEW YORK QUADRANGLE, 1979
 USGS MEDINA, NEW YORK QUADRANGLE, 1980



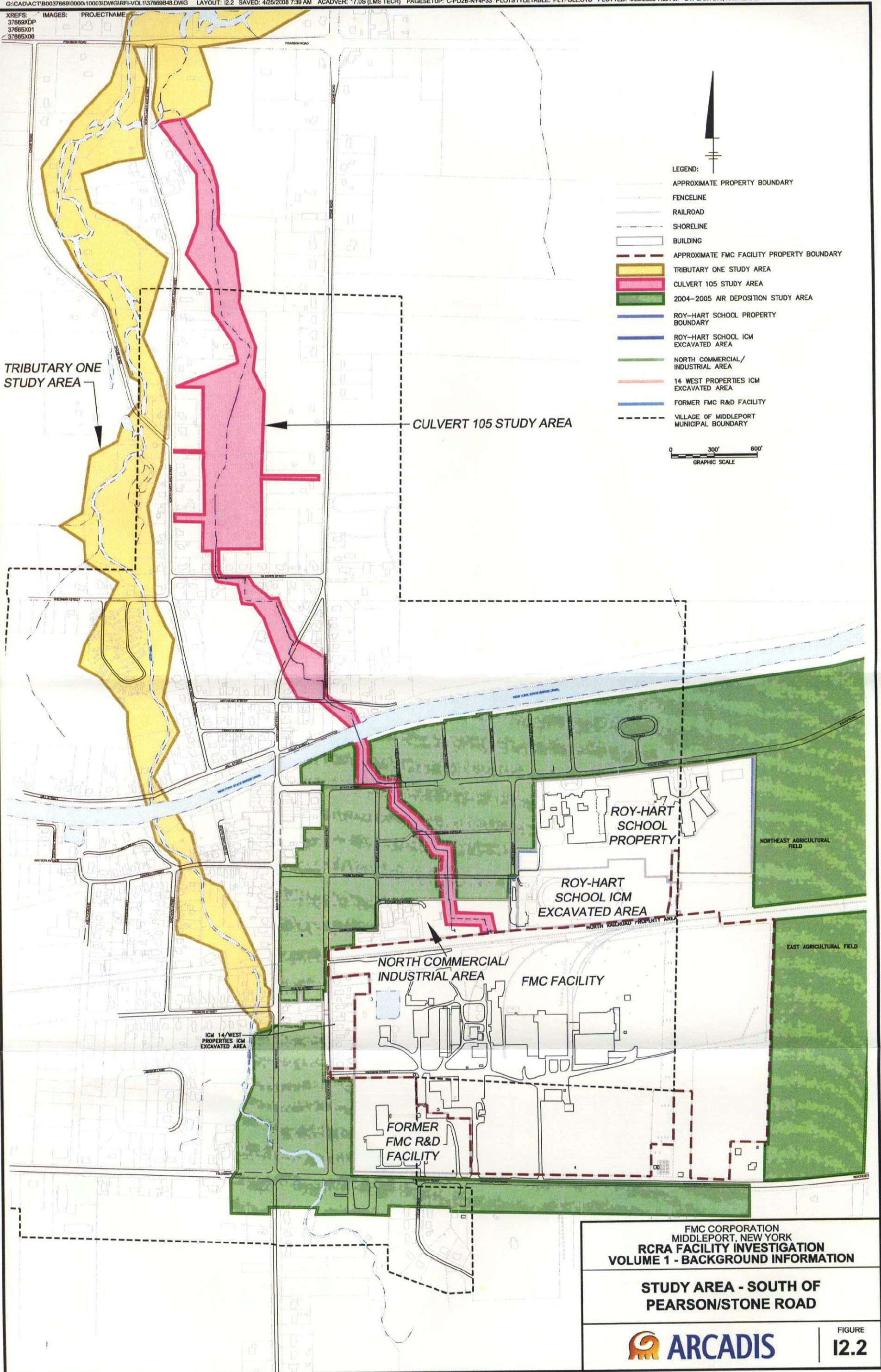
FMC CORPORATION
 MIDDLEPORT, NEW YORK
 RCRA FACILITY INVESTIGATION
 VOLUME 1 - BACKGROUND INFORMATION

SITE LOCATION



FIGURE
12.1

XREFS: IMAGES: PROJECTNAME:
 37669XDP
 37665X01
 37665X06



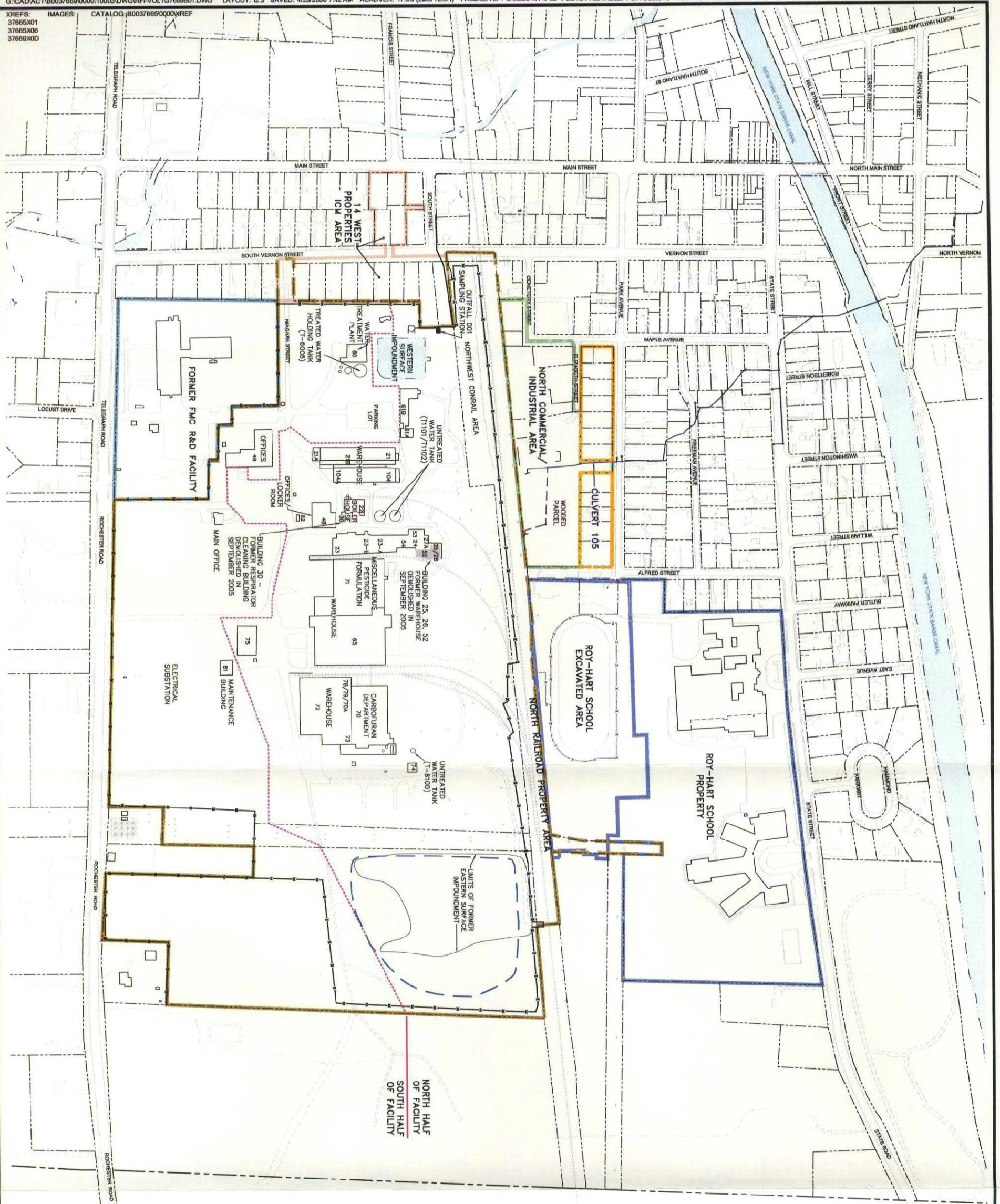
FMC CORPORATION
 MIDDLEPORT, NEW YORK
RCRA FACILITY INVESTIGATION
VOLUME 1 - BACKGROUND INFORMATION

STUDY AREA - SOUTH OF PEARSON/STONE ROAD



FIGURE
12.2

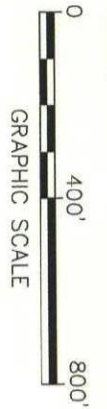
XREFS: 37665X01
 37665X06
 37669X0D
 IMAGES: CATALOG:\B0037669\0000\REF



LEGEND:

- APPROXIMATE PROPERTY LINE
- ▭ EXISTING BUILDING
- EXISTING FENCE LINE
- EXISTING RAILROAD
- EXISTING CULVERT
- EDGE OF WATER
- NORTH/SOUTH BOUNDARY FOR SURFACE WATER FLOW
- FMC FACILITY PROPERTY BOUNDARY
- LIMITS OF ESI FILL AREA
- ROY-HART SCHOOL PROPERTY BOUNDARY
- ROY-HART SCHOOL ICM EXCAVATED AREA
- NORTH COMMERCIAL/INDUSTRIAL AREA
- 14 WEST ICM PROPERTIES EXCAVATED AREA BOUNDARY
- FMC'S FORMER R&D FACILITY
- P-BLOCK PROPERTIES
- PLANT FENCE LINE
- CULVERT 105
- 73 BUILDING NUMBER

- NOTES:**
1. BASEMAP OBTAINED FROM A FIGURE BY CONESTOGA-ROVERS AND ASSOCIATES ENTITLED "HISTORIC ARSENIC SOIL/SEDIMENT DATA - NORTH RAILROAD PROPERTY" DATED OCTOBER 2003 AT A SCALE OF 1"=120'.
 2. ALL LOCATIONS ARE APPROXIMATE.

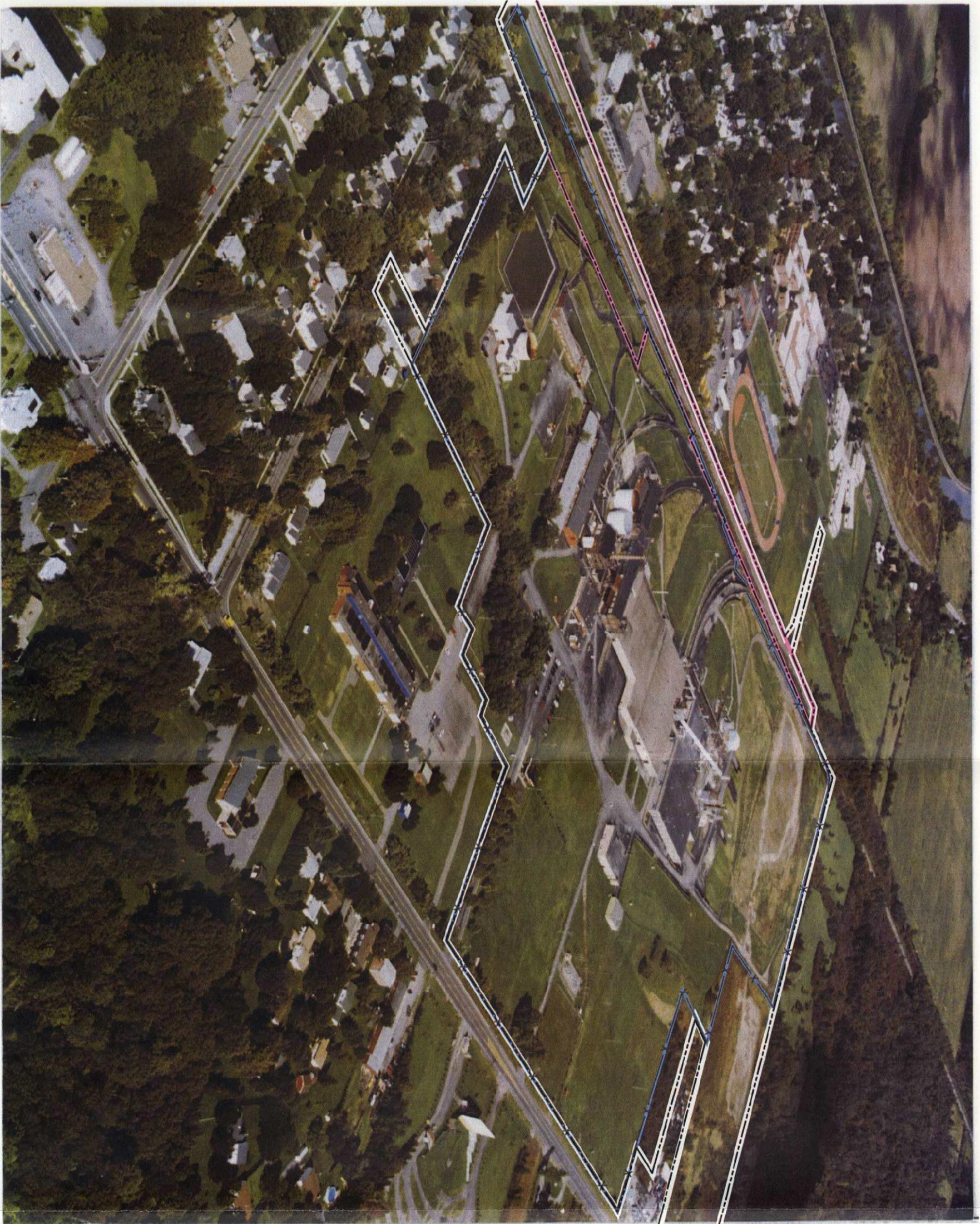


FMC CORPORATION - MIDDLEPORT, NEW YORK
 RCRA FACILITY INVESTIGATION -
 VOLUME 1 - BACKGROUND INFORMATION

2008 FACILITY PLAN



FIGURE
12.3



LEGEND:

- SITE BOUNDARY (APPROXIMATE)
- x- FACILITY FENCELINE (APPROXIMATE)
- NORTH RAILROAD PROPERTY BOUNDARY (APPROXIMATE)

NOTES:

1. AERIAL PHOTOGRAPH TAKEN ON 9/28/2000 BY EL COMP DATA SYSTEMS.
2. SITE BOUNDARY IS APPROXIMATE.

FMC CORPORATION
 MIDDLEPORT, NEW YORK
**RCRA FACILITY INVESTIGATION
 VOLUME 1 - BACKGROUND INFORMATION**

FACILITY AERIAL PHOTO

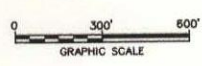
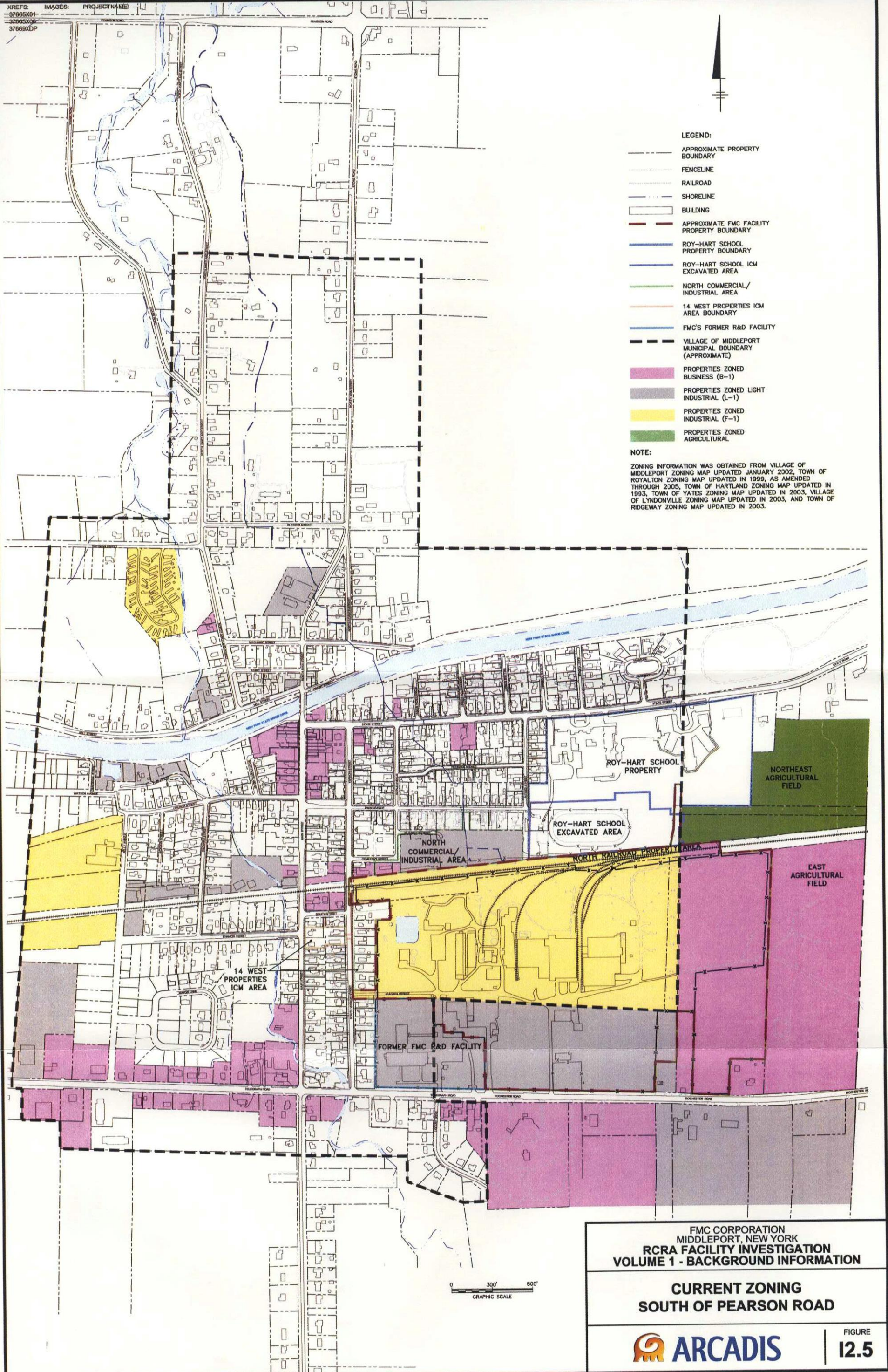
XREFS: IMAGES: PROJECTNAME:
 37669R58
 37669RDP

LEGEND:

- APPROXIMATE PROPERTY BOUNDARY
- FENCELINE
- RAILROAD
- SHORELINE
- BUILDING
- APPROXIMATE FMC FACILITY PROPERTY BOUNDARY
- ROY-HART SCHOOL PROPERTY BOUNDARY
- ROY-HART SCHOOL ICM EXCAVATED AREA
- NORTH COMMERCIAL/ INDUSTRIAL AREA
- 14 WEST PROPERTIES ICM AREA BOUNDARY
- FMC'S FORMER R&D FACILITY
- VILLAGE OF MIDDLEPORT MUNICIPAL BOUNDARY (APPROXIMATE)
- PROPERTIES ZONED BUSINESS (B-1)
- PROPERTIES ZONED LIGHT INDUSTRIAL (L-1)
- PROPERTIES ZONED INDUSTRIAL (F-1)
- PROPERTIES ZONED AGRICULTURAL

NOTE:

ZONING INFORMATION WAS OBTAINED FROM VILLAGE OF MIDDLEPORT ZONING MAP UPDATED JANUARY 2002, TOWN OF ROYALTON ZONING MAP UPDATED IN 1999, AS AMENDED THROUGH 2005, TOWN OF HARTLAND ZONING MAP UPDATED IN 1993, TOWN OF YATES ZONING MAP UPDATED IN 2003, VILLAGE OF LYNDONVILLE ZONING MAP UPDATED IN 2003, AND TOWN OF RIDGEWAY ZONING MAP UPDATED IN 2003.



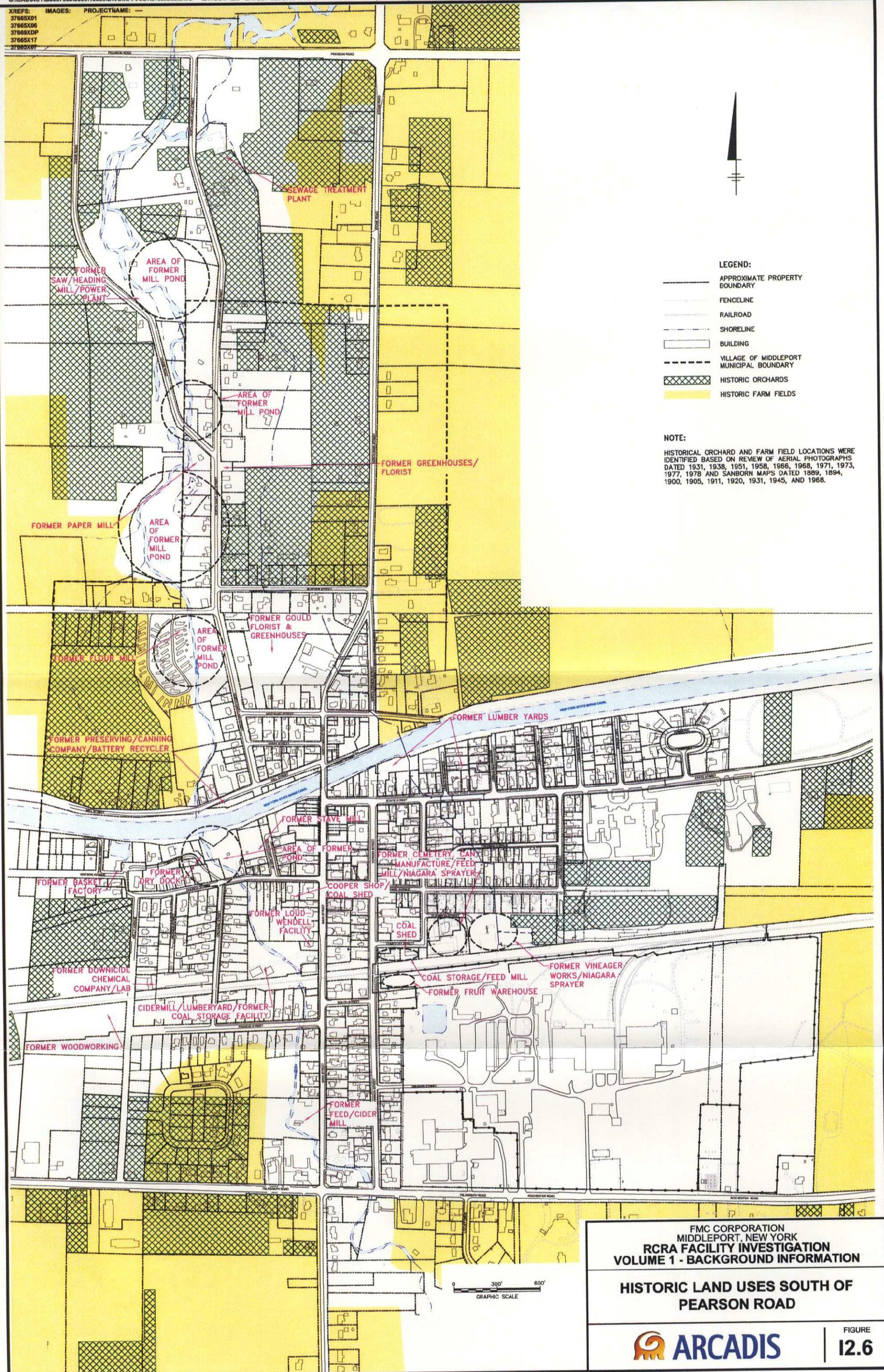
FMC CORPORATION
MIDDLEPORT, NEW YORK
RCRA FACILITY INVESTIGATION
VOLUME 1 - BACKGROUND INFORMATION

CURRENT ZONING
SOUTH OF PEARSON ROAD

ARCADIS

FIGURE
12.5

XREFS: IMAGES: PROJECTNAME: ---
 37665X01
 37665X06
 37669XDP
 37665X17
 37665X07



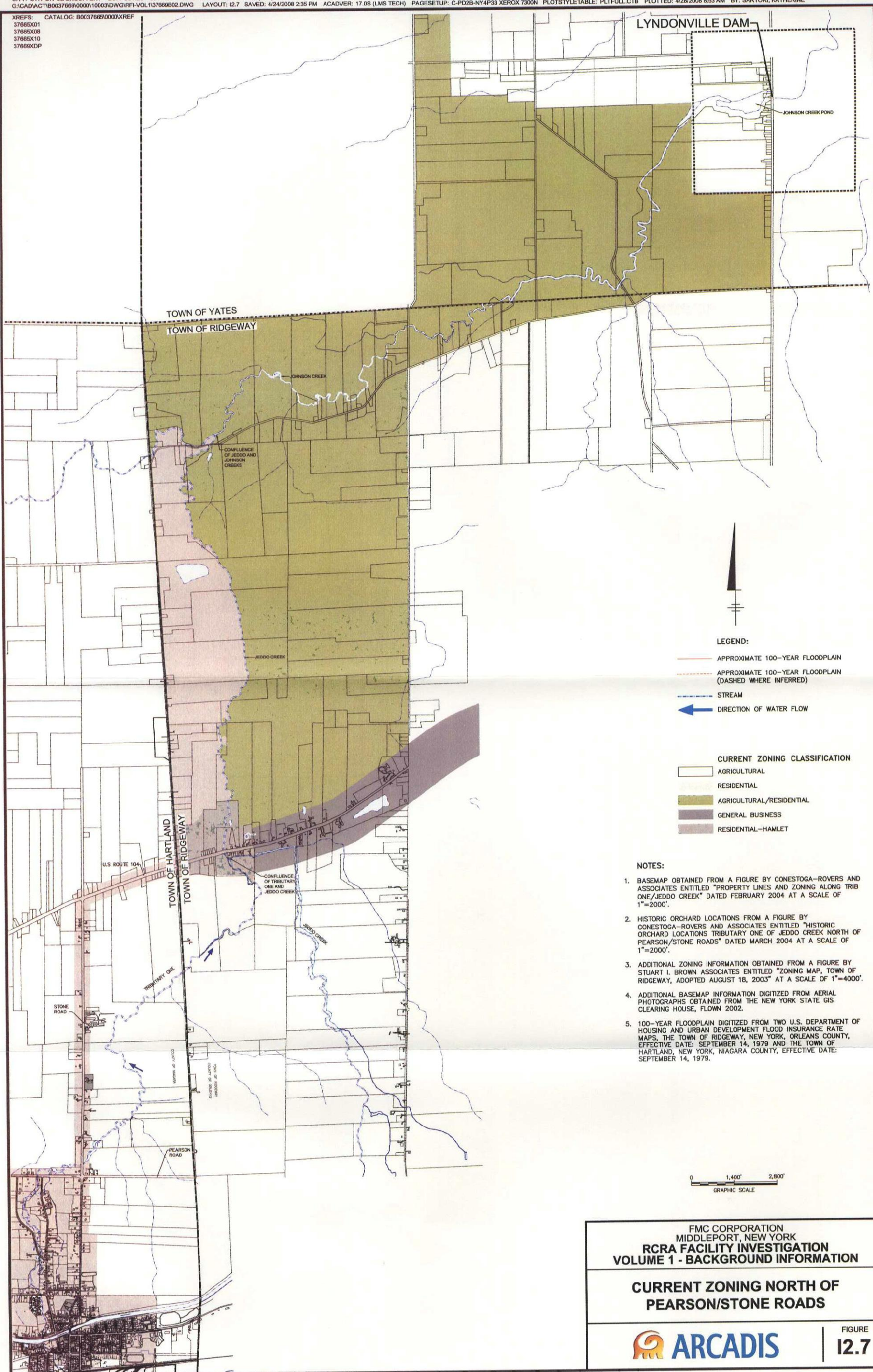
FMC CORPORATION
 MIDDLEPORT, NEW YORK
RCRA FACILITY INVESTIGATION
VOLUME 1 - BACKGROUND INFORMATION

HISTORIC LAND USES SOUTH OF PEARSON ROAD

ARCADIS

FIGURE
12.6

XREFS: CATALOG: B0037669\0000\XREF
 37665X01
 37665X08
 37665X10
 37665XDP



LEGEND:

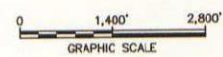
- APPROXIMATE 100-YEAR FLOODPLAIN
- APPROXIMATE 100-YEAR FLOODPLAIN (DASHED WHERE INFERRED)
- STREAM
- DIRECTION OF WATER FLOW

CURRENT ZONING CLASSIFICATION

- AGRICULTURAL
- RESIDENTIAL
- AGRICULTURAL/RESIDENTIAL
- GENERAL BUSINESS
- RESIDENTIAL-HAMLET

NOTES:

1. BASEMAP OBTAINED FROM A FIGURE BY CONESTOGA-ROVERS AND ASSOCIATES ENTITLED "PROPERTY LINES AND ZONING ALONG TRIB ONE/JEDDO CREEK" DATED FEBRUARY 2004 AT A SCALE OF 1"=2000'.
2. HISTORIC ORCHARD LOCATIONS FROM A FIGURE BY CONESTOGA-ROVERS AND ASSOCIATES ENTITLED "HISTORIC ORCHARD LOCATIONS TRIBUTARY ONE OF JEDDO CREEK NORTH OF PEARSON/STONE ROADS" DATED MARCH 2004 AT A SCALE OF 1"=2000'.
3. ADDITIONAL ZONING INFORMATION OBTAINED FROM A FIGURE BY STUART I. BROWN ASSOCIATES ENTITLED "ZONING MAP, TOWN OF RIDGEWAY, ADOPTED AUGUST 18, 2003" AT A SCALE OF 1"=4000'.
4. ADDITIONAL BASEMAP INFORMATION DIGITIZED FROM AERIAL PHOTOGRAPHS OBTAINED FROM THE NEW YORK STATE GIS CLEARING HOUSE, FLOWN 2002.
5. 100-YEAR FLOODPLAIN DIGITIZED FROM TWO U.S. DEPARTMENT OF HOUSING AND URBAN DEVELOPMENT FLOOD INSURANCE RATE MAPS, THE TOWN OF RIDGEWAY, NEW YORK, ORLEANS COUNTY, EFFECTIVE DATE: SEPTEMBER 14, 1979 AND THE TOWN OF HARTLAND, NEW YORK, NIAGARA COUNTY, EFFECTIVE DATE: SEPTEMBER 14, 1979.



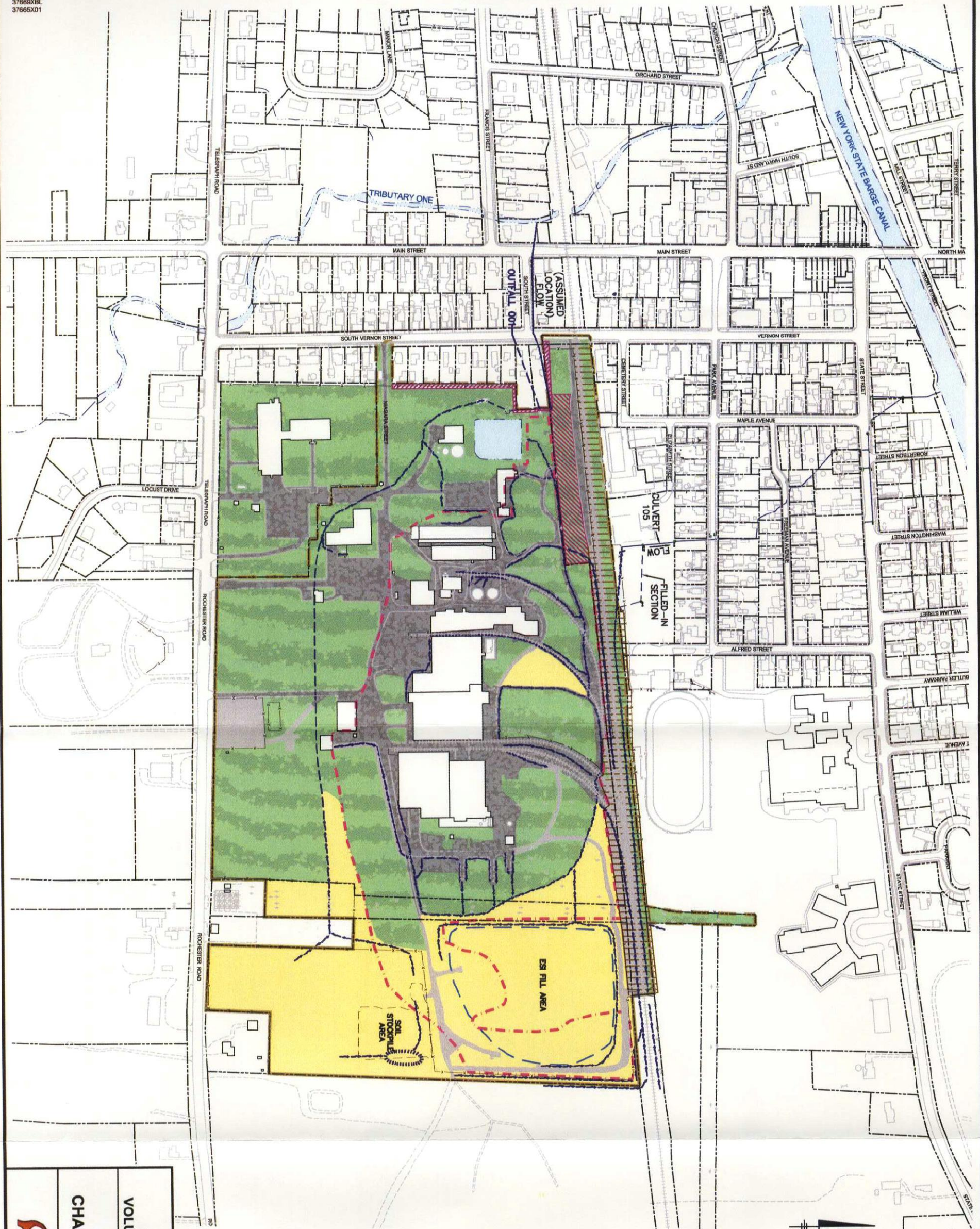
FMC CORPORATION
 MIDDLEPORT, NEW YORK
RCRA FACILITY INVESTIGATION
VOLUME 1 - BACKGROUND INFORMATION

CURRENT ZONING NORTH OF PEARSON/STONE ROADS



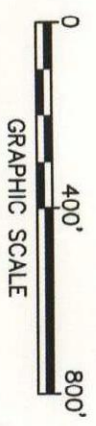
FIGURE
12.7

XREFS: 37665X06
 37669XBL
 37665X01
 IMAGES: PROJECTNAME: —



NOTES:

1. THIS FIGURE WAS PREPARED FROM A DRAWING BY CRA, ENTITLED "SURFACE CHARACTERISTICS AND SURFACE WATER DRAINAGE", FIGURE 2.6, DRAWING NO. 02788-90(055)GN-NF034, DATED JAN. 27, 1999, @ A SCALE OF 1" = 300'.
2. CHARACTERISTICS AND DRAINAGE PATTERNS ARE AS OF FIRST QUARTER 2008.



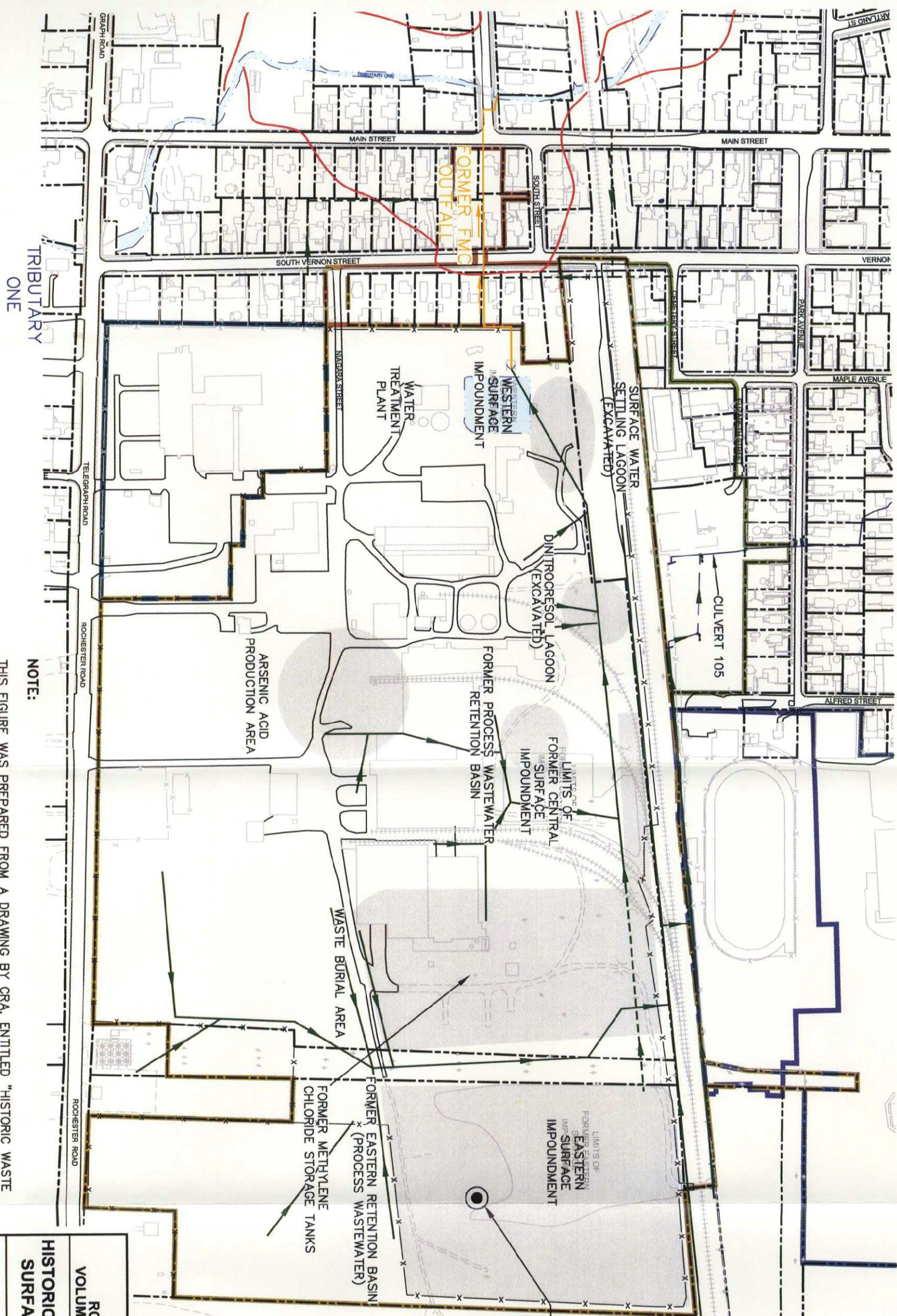
FMC CORPORATION
 MIDDLEBURY NEW YORK
RCRA FACILITY INVESTIGATION
VOLUME 1 - BACKGROUND INFORMATION

2008 FACILITY SURFACE
CHARACTERISTICS AND DRAINAGE

FIGURE
12.8

XREFS: 37689X01
 37685X06
 37685X01

IMAGES: PROJECTNAME: _____



TRIBUTARY ONE

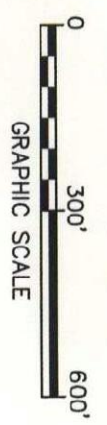
NOTE:

THIS FIGURE WAS PREPARED FROM A DRAWING BY CRA, ENTITLED "HISTORIC WASTE DISPOSAL AREAS AND SURFACE WATER FLOW PATHWAYS", FIGURE 2.7, DRAWING NO. 02788-90(055)GN-NF075, DATED JAN. 26, 1999, @ A SCALE OF 1" = 400'.



LEGEND:

- FORMER SURFACE WATER FLOW PATH
- APPROXIMATE ALIGNMENT OF FORMER DISCHARGE PIPE FROM SITE
- APPROXIMATE BOUNDARY OF FEMA 100 YEAR FLOODPLAIN
- FORMER BURIED PIPE
- FORMER OPEN DITCH
- AREA OF PAST DISPOSAL ACTIVITY
- UNUSED DEEP WELL (CLOSED DECEMBER 1986)

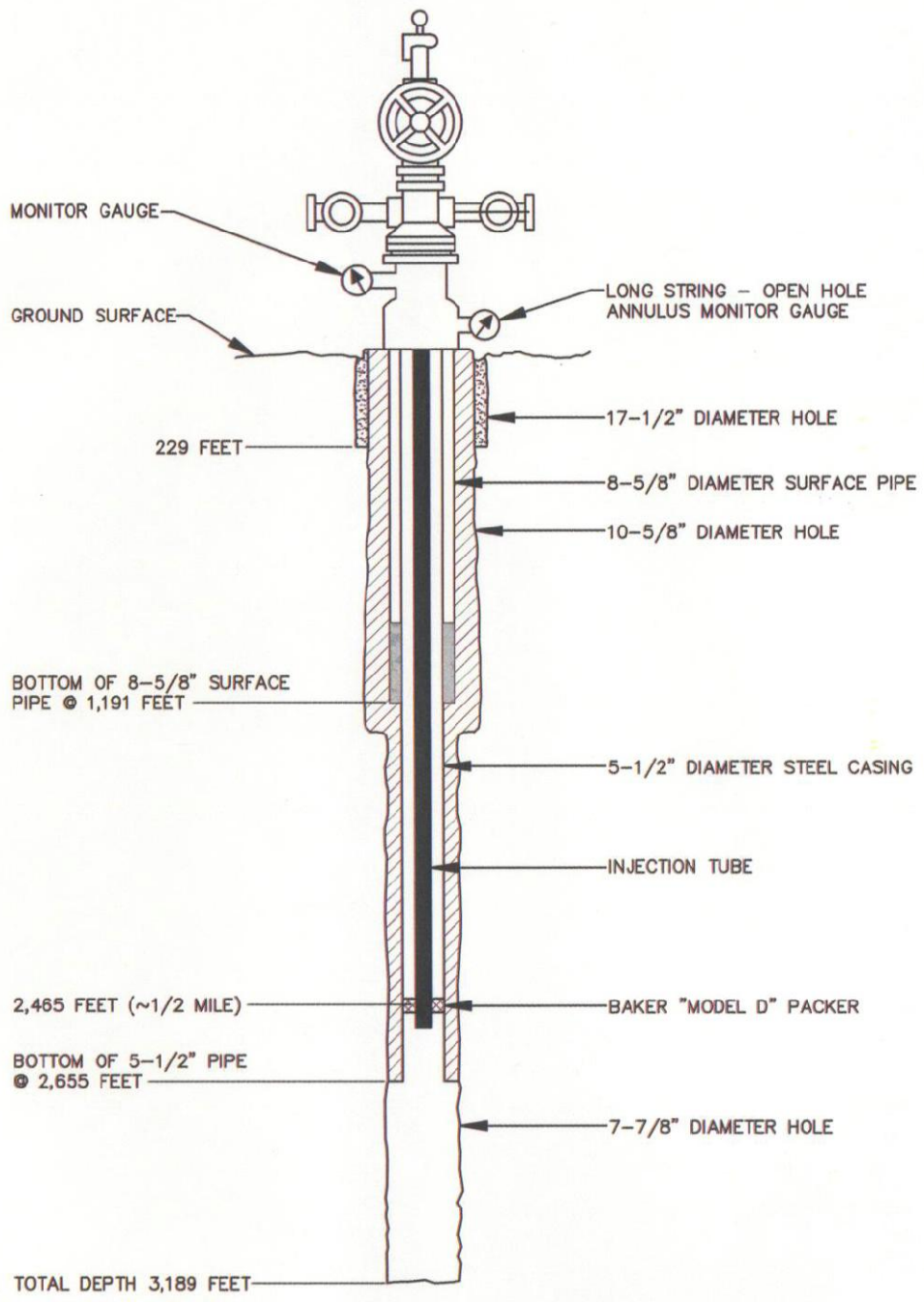


FMC CORPORATION
 MIDDLEPORT, NEW YORK
RCRA FACILITY INVESTIGATION
VOLUME 1 - BACKGROUND INFORMATION
HISTORIC WASTE DISPOSAL AREAS AND
SURFACE WATER FLOW PATHWAYS




FIGURE
12.9

CITY: SYR DIV 85GROUP: ENV DB: PGL LD: PGL KLS PM: LB LVR: ON#*OFF=REF. (FRZ)
 G:\CAD\ACT190037669\00001\10003\DWG\RF1-VOL1\37669M01.DWG LAYOUT: 12.10 - SAVED: 4/24/2008 2:46 PM ACADVER: 17.05 (LMS TECH) PAGES: 17.05 (LMS TECH) PAGES: 17.05 (LMS TECH) PAGES: 17.05 (LMS TECH)
 XREFS: IMAGES: PROJECTNAME: 376690AP

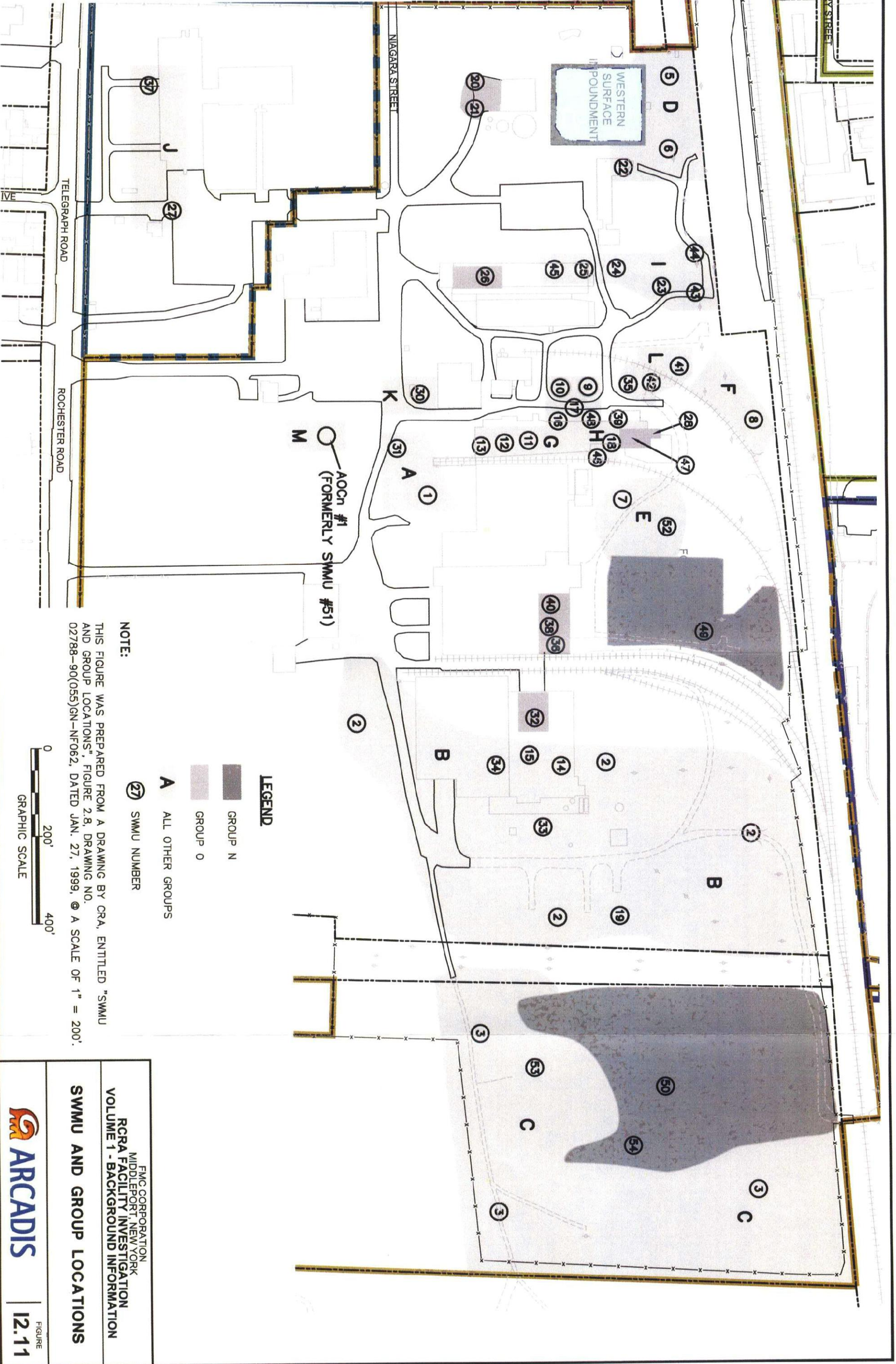


DEEP WELL CONSTRUCTION PRIOR TO CLOSURE

NOT TO SCALE

| | |
|---|------------------------|
| FMC CORPORATION MIDDLEPORT, NEW YORK RCRA FACILITY INVESTIGATION VOLUME 1 - BACKGROUND INFORMATION | |
| DEEP WELL CONSTRUCTION PRIOR TO CLOSURE | |
|  | FIGURE 12.10 |

XREFS: 37669XBL 37665X01
 IMAGES: PROJECTNAME: —



NOTE:

THIS FIGURE WAS PREPARED FROM A DRAWING BY CRA, ENTITLED "SWMU AND GROUP LOCATIONS", FIGURE 2.8, DRAWING NO. 02788-90(055)GN-NF062, DATED JAN. 27, 1999. @ A SCALE OF 1" = 200'.

- A** ALL OTHER GROUPS
- 27** SWMU NUMBER

LEGEND

- GROUP N
- GROUP O



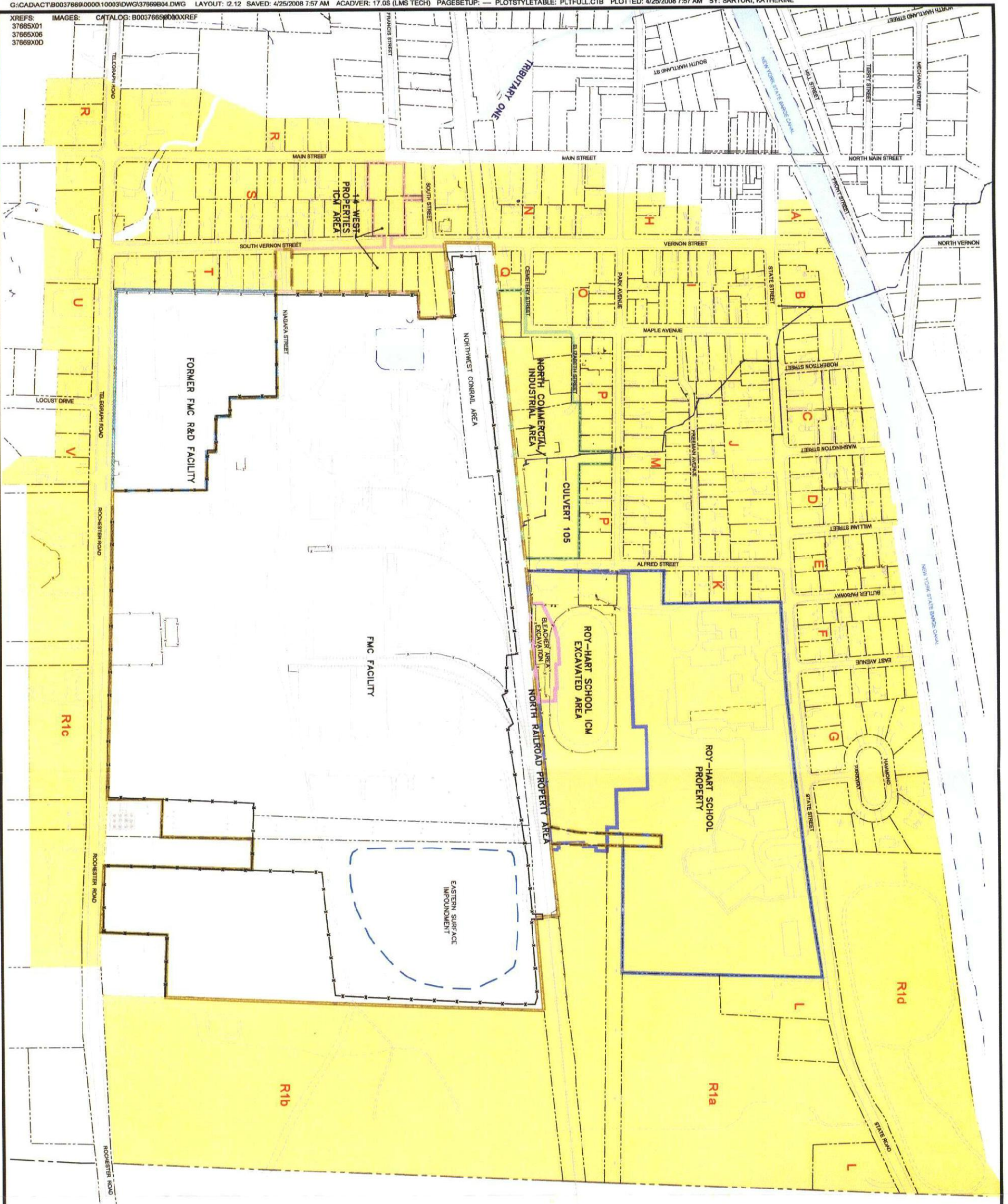
FMC CORPORATION
 MIDDLEPORT, NEW YORK
 RCRA FACILITY INVESTIGATION
 VOLUME 1 - BACKGROUND INFORMATION

SWMU AND GROUP LOCATIONS



FIGURE
I2.11

XREFS: 37665X01
 37665X06
 37669X0D
 IMAGES: CATALOG: B0037669\B000\XREF



- LEGEND:**
- APPROXIMATE PROPERTY BOUNDARY
 - EXISTING BUILDING
 - EXISTING FENCELINE
 - EXISTING RAILROAD
 - EXISTING CULVERT
 - EDGE OF WATER
 - FMC FACILITY PROPERTY BOUNDARY
 - LIMITS OF ESI FILL AREA
 - ROY-HART SCHOOL PROPERTY BOUNDARY
 - ROY-HART SCHOOL ICM EXCAVATED AREA
 - NORTH COMMERCIAL/ INDUSTRIAL AREA
 - 14 WEST PROPERTIES ICM AREA
 - FORMER FMC R&D FACILITY
 - PLANT FENCELINE
 - CULVERT 105
 - BUILDING NUMBER 73
 - LIMITS OF STUDY AREA
 - GROUP STUDY AREA

- NOTES:**
1. BASEMAP OBTAINED FROM A FIGURE BY CONSULTING ENGINEERS AND ASSOCIATES TITLED "HISTORIC AIRBORNE SOIL/SEDIMENT DATA - NORTH RAILROAD PROPERTY" DATED OCTOBER 2003 AT A SCALE OF 1"=120'.
 2. ALL LOCATIONS ARE APPROXIMATE.

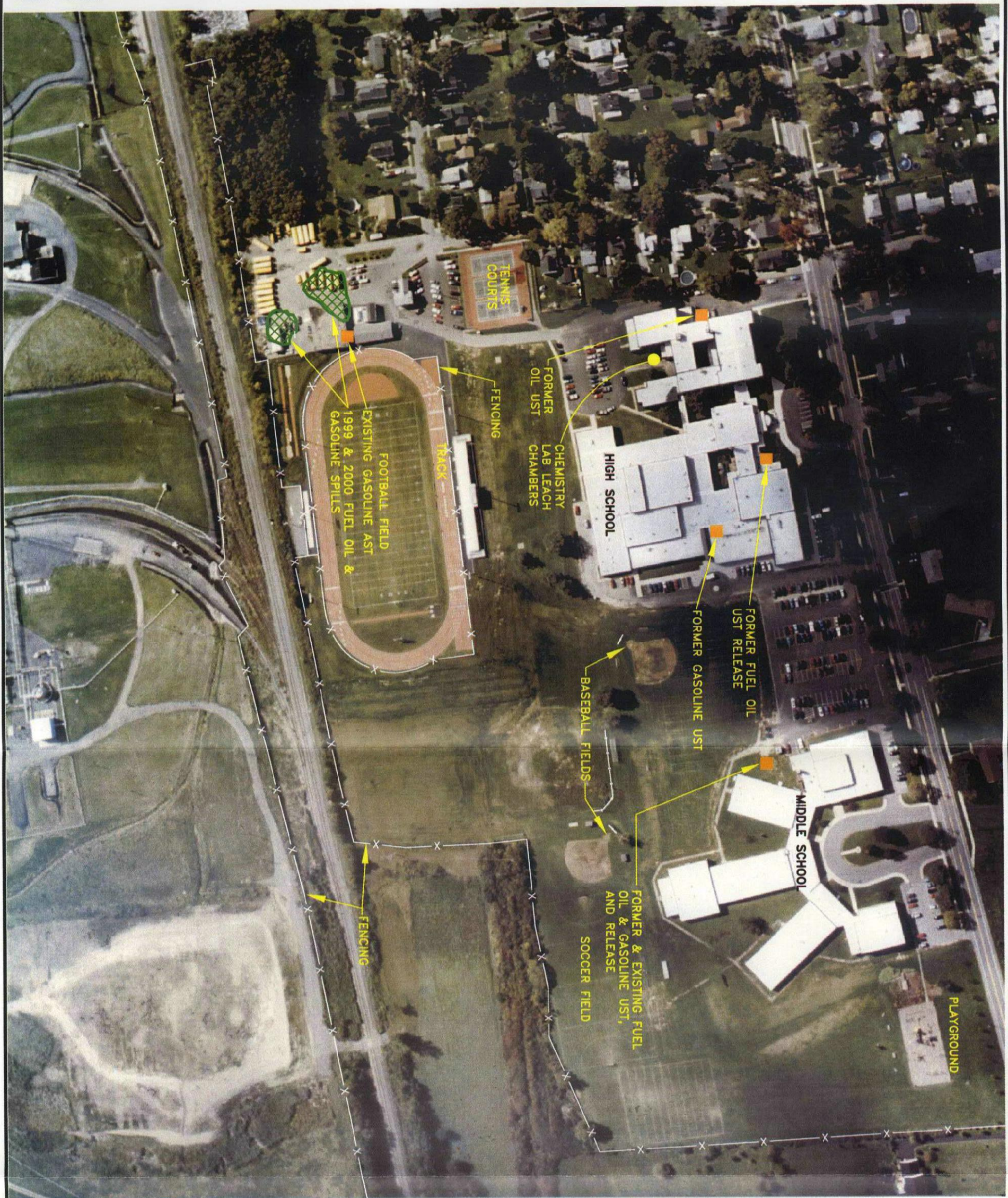


FMC CORPORATION - MIDDLEPORT, NEW YORK
 RCRA FACILITY INVESTIGATION -
 VOLUME 1 - BACKGROUND INFORMATION
**HISTORIC AIR DEPOSITION/OFF-SITE
 STUDY AREA**



FIGURE
12.12

XREFS: IMAGES: PROJECTNAME: ---
 37669XBL 37669X70.TIF



SOURCE:
 AERIAL PHOTOGRAPH FROM EL COMP DATA SYSTEMS, LOCKPORT, NY. FLOWN ON 9/28/2000.

FMC CORPORATION
 MIDDLEPORT, NEW YORK
RCRA FACILITY INVESTIGATION
VOLUME 1 - BACKGROUND INFORMATION

ROY-HART SCHOOL LAYOUT



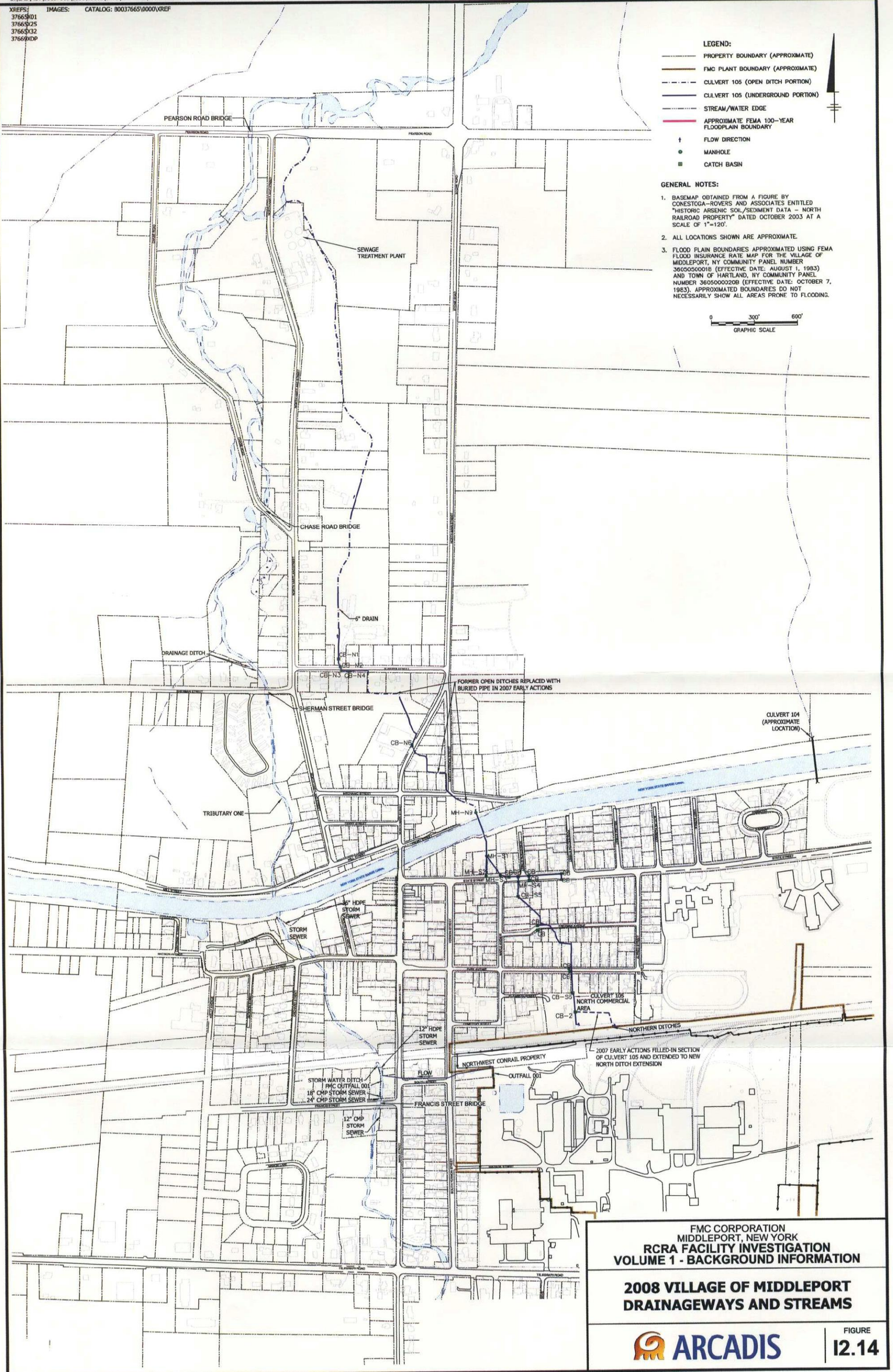
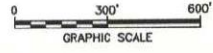
FIGURE
12.13

XREFS: IMAGES: CATALOG: 80037665\0000\VREF
 37665W1
 37665W2
 37665X32
 37665XDP

- LEGEND:**
- PROPERTY BOUNDARY (APPROXIMATE)
 - FMC PLANT BOUNDARY (APPROXIMATE)
 - - - CULVERT 105 (OPEN DITCH PORTION)
 - CULVERT 105 (UNDERGROUND PORTION)
 - STREAM/WATER EDGE
 - APPROXIMATE FEMA 100-YEAR FLOODPLAIN BOUNDARY
 - ↑ FLOW DIRECTION
 - MANHOLE
 - CATCH BASIN

GENERAL NOTES:

1. BASEMAP OBTAINED FROM A FIGURE BY CONESTOGA-ROVERS AND ASSOCIATES ENTITLED "HISTORIC ARSENIC SOIL/SEDIMENT DATA - NORTH RAILROAD PROPERTY" DATED OCTOBER 2003 AT A SCALE OF 1"=120'.
2. ALL LOCATIONS SHOWN ARE APPROXIMATE.
3. FLOOD PLAIN BOUNDARIES APPROXIMATED USING FEMA FLOOD INSURANCE RATE MAP FOR THE VILLAGE OF MIDDLEPORT, NY COMMUNITY PANEL NUMBER 3605050001B (EFFECTIVE DATE: AUGUST 1, 1983) AND TOWN OF HARTLAND, NY COMMUNITY PANEL NUMBER 3605000020B (EFFECTIVE DATE: OCTOBER 7, 1983). APPROXIMATED BOUNDARIES DO NOT NECESSARILY SHOW ALL AREAS PRONE TO FLOODING.



FMC CORPORATION
 MIDDLEPORT, NEW YORK
**RCRA FACILITY INVESTIGATION
 VOLUME 1 - BACKGROUND INFORMATION**

**2008 VILLAGE OF MIDDLEPORT
 DRAINAGEWAYS AND STREAMS**


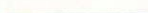



FIGURE
12.14

XREFS: 37689XDP
 IMAGES: MIDDLE-2.TIF
 PROJECTNAME: _____

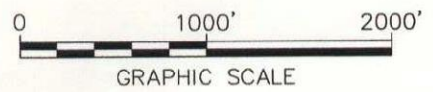


LEGEND:

-  STREAM
-  JOHNSON CREEK
-  JEDDO CREEK
-  TRIBUTARY ONE
-  UNNAMED TRIBUTARIES

NOTE:

1. BASE MAP AND TOPOGRAPHIC INFORMATION OBTAINED FROM USGS 7.5 MIN QUADS: BARKER, NY (1980), GASPORT, NY (1979), LYNDONVILLE, NY (1979), AND MEDINA, NY (1980).



FMC CORPORATION
 MIDDLEPORT, NEW YORK
**RCRA FACILITY INVESTIGATION
 VOLUME 1 - BACKGROUND INFORMATION**

**LOCATION OF JEDDO & JOHNSON
 CREEK TRIBUTARIES**














 **ARCADIS**

FIGURE
12.15

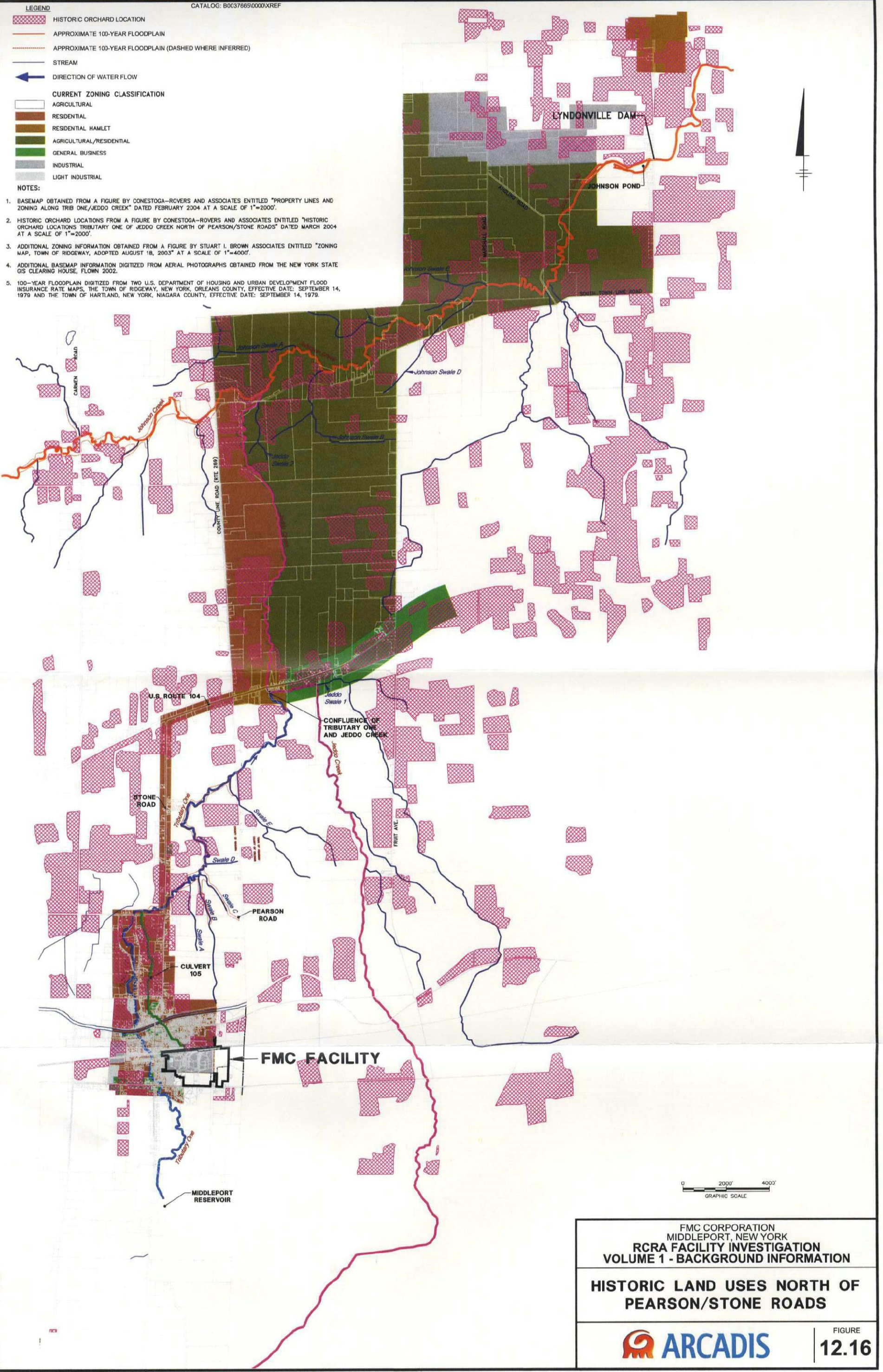
CATALOG: B0037685\0000\XREF

LEGEND

-  HISTORIC ORCHARD LOCATION
-  APPROXIMATE 100-YEAR FLOODPLAIN
-  APPROXIMATE 100-YEAR FLOODPLAIN (DASHED WHERE INFERRED)
-  STREAM
-  DIRECTION OF WATER FLOW
- CURRENT ZONING CLASSIFICATION**
-  AGRICULTURAL
-  RESIDENTIAL
-  RESIDENTIAL HAMLET
-  AGRICULTURAL/RESIDENTIAL
-  GENERAL BUSINESS
-  INDUSTRIAL
-  LIGHT INDUSTRIAL

NOTES:

1. BASEMAP OBTAINED FROM A FIGURE BY CONESTOGA-ROVERS AND ASSOCIATES ENTITLED "PROPERTY LINES AND ZONING ALONG TRIB ONE/JEDDO CREEK" DATED FEBRUARY 2004 AT A SCALE OF 1"=2000'.
2. HISTORIC ORCHARD LOCATIONS FROM A FIGURE BY CONESTOGA-ROVERS AND ASSOCIATES ENTITLED "HISTORIC ORCHARD LOCATIONS TRIBUTARY ONE OF JEDDO CREEK NORTH OF PEARSON/STONE ROADS" DATED MARCH 2004 AT A SCALE OF 1"=2000'.
3. ADDITIONAL ZONING INFORMATION OBTAINED FROM A FIGURE BY STUART I. BROWN ASSOCIATES ENTITLED "ZONING MAP, TOWN OF RIDGEWAY, ADOPTED AUGUST 18, 2003" AT A SCALE OF 1"=4000'.
4. ADDITIONAL BASEMAP INFORMATION DIGITIZED FROM AERIAL PHOTOGRAPHS OBTAINED FROM THE NEW YORK STATE GIS CLEARING HOUSE, FLOWN 2002.
5. 100-YEAR FLOODPLAIN DIGITIZED FROM TWO U.S. DEPARTMENT OF HOUSING AND URBAN DEVELOPMENT FLOOD INSURANCE RATE MAPS, THE TOWN OF RIDGEWAY, NEW YORK, ORLEANS COUNTY, EFFECTIVE DATE: SEPTEMBER 14, 1979 AND THE TOWN OF HARTLAND, NEW YORK, NIAGARA COUNTY, EFFECTIVE DATE: SEPTEMBER 14, 1979.



FMC CORPORATION
 MIDDLEPORT, NEW YORK
**RCRA FACILITY INVESTIGATION
 VOLUME 1 - BACKGROUND INFORMATION**

**HISTORIC LAND USES NORTH OF
 PEARSON/STONE ROADS**


 **ARCADIS**

FIGURE
12.16

