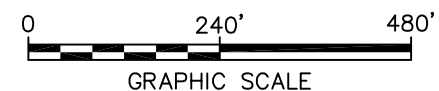


NOTES:

1. THIS FIGURE WAS PREPARED FROM A DRAWING BY CRA, ENTITLED "SURFACE CHARACTERISTICS AND SURFACE WATER DRAINAGE", FIGURE 2.6, DRAWING NO. 02788-90(055)GN-NF034, DATED JAN. 27, 1999, @ A SCALE OF 1" = 300'.
2. WATERSHED LIMITS UPDATED IN 2010 AS PART OF THE WSI HYDROLOGIC EVALUATION.
3. PHOTOGRAPH TAKEN SEPTEMBER 2011.



THIS PRINT AND ALL INFORMATION THEREON IS THE PROPERTY OF FMC AND IS CONFIDENTIAL AND MUST NOT BE MADE PUBLIC OR COPIED UNLESS AUTHORIZED BY FMC. IT IS SUBJECT TO RETURN ON DEMAND.

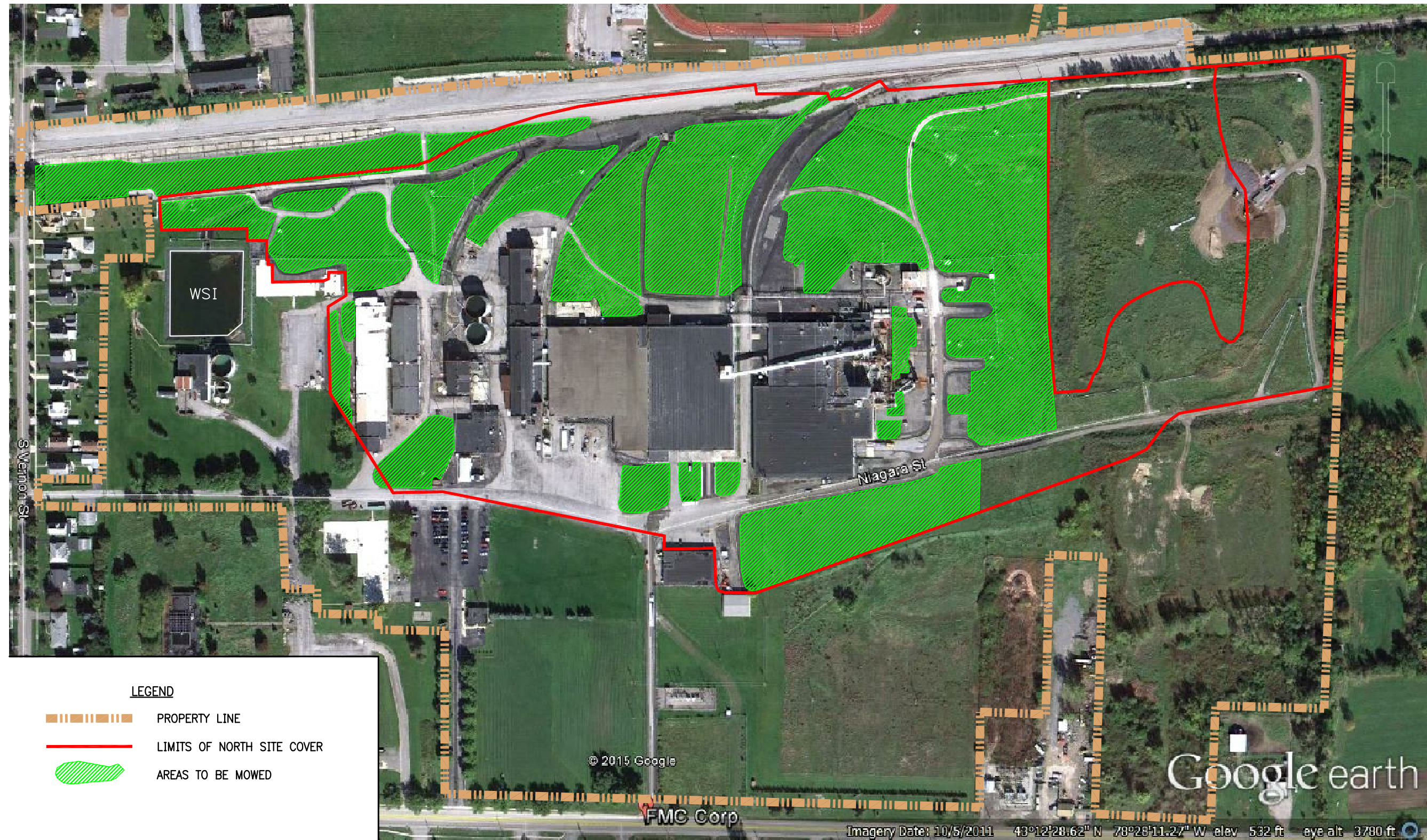
FIGURE 5

FMC CORPORATION—MIDDLEPORT, NEW YORK
NORTH SITE COVER OPERATIONS & MAINTENANCE PLAN

NORTH SITE COVER INSPECTION AREAS

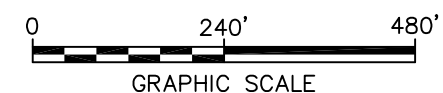
PARSONS

40 LA RIVIERE DRIVE, SUITE 350, BUFFALO, NEW YORK 14202 PHONE: 716-541-0730



NOTES:

1. THIS FIGURE WAS PREPARED FROM A DRAWING BY CRA, ENTITLED "SURFACE CHARACTERISTICS AND SURFACE WATER DRAINAGE", FIGURE 2.6, DRAWING NO. 02788-90(055)GN-NF034, DATED JAN. 27, 1999, @ A SCALE OF 1" = 300'.
2. WATERSHED LIMITS UPDATED IN 2010 AS PART OF THE WSI HYDROLOGIC EVALUATION.
3. PHOTOGRAPH TAKEN SEPTEMBER 2011.



THIS PRINT AND ALL INFORMATION THEREON IS THE PROPERTY OF FMC AND IS CONFIDENTIAL AND MUST NOT BE MADE PUBLIC OR COPIED UNLESS AUTHORIZED BY FMC. IT IS SUBJECT TO RETURN ON DEMAND.

FIGURE 6

FMC CORPORATION—MIDDLEPORT, NEW YORK
NORTH SITE COVER OPERATIONS & MAINTENANCE PLAN

AREAS TO BE MOWED

PARSONS

40 LA RIVIERE DRIVE, SUITE 350, BUFFALO, NEW YORK 14202 PHONE: 716-541-0730

TABLES

Table 1

**FMC - Middleport , NY
North Site Cover Area
Underdrains and Sumps**

Collection Sump	Description	Inflow Source(s)	Discharges to	Approximate Length of Underdrain Piping	Receives Groundwater	Receives Surface Water
Sump 1	Sanitary Sewer Underdrain	Underdrain in bedding material of the sanitary sewer pipe.	Sump 3	100	yes	no
Sump 2	Swale Underdrain #1	Underdrain beneath invert of main northern asphalt-lined swale, north of WSI.	Tanks T-1101 & T-1102	500	yes	no
Sump 3	WSI Underdrain	Underdrain network beneath the WSI liner.	Tanks T-1101 & T-1102	1,200	yes	no
Sump 4	Swale Underdrain #2	Underdrains beneath invert of main northern asphalt-lined swale north of former Central Surface Impoundment (CSI).	Sump at Tanks T-1101 & T-1102	1,000	yes	no
Sump 5	Building 67 Swale Underdrain	Underdrain beneath invert of Building 67 swale.	Sump at Tanks T-1101 & T-1102	200	yes	no
Sump 6	Raymond Mill Underdrain	Underdrains beneath rail spur #2 and trench drain along Bldg 23 that was covered under a polyurea surface liner installed in 2013. Sump 6 has two pumps.	Tanks T-1101 & T-1102	1,200	yes	no
Sump 7	South CSI Interceptor	Underdrains beneath invert of asphalt-lined swales south of former CSI and collection pipe in bedding beneath rail spur #3 between Bldgs. 71 and 70/72.	Tanks T-1101 & T-1102	585	yes	no
Sump 8	Rail Unloading Underdrain	Collection pipe in bedding beneath rail spur #4 west of Bldgs 70/72.	Tanks T-1101 & T-1102	100	yes	no
Sump 9	Bldg 72 Loading Dock Drain	Buried foundation drain pipe and stormwater runoff to trench drain at loading dock and buried culvert pipe.	Tank T-8100	50	yes	yes
Sump 10	Bldg 70 East Pad	Rainwater on concrete pad east of Bldg. 70. and roof runoff from the upper part of Bldg. 70	Tank T-8100	-	no	yes
Sump 11	Building 70 Manhole	Rainwater to collection pipe at base of gravel slope east of Bldg. 70.	Tank T-8100	150	yes	no
Sump 12	Bldg 70 North Pad	Roof runoff water from limited portion of Bldg 70 northeastern side, surface water and distillate from the Calfran Unit.	Tank T-8100	-	no	yes
Sump 13	Evaporator Pad Swale Underdrain	Groundwater and surface water runoff from shallow buried collection pipe along Bldg 22 and trench drain between Bldgs 22 and 104.	Sump at Tanks T-1101 & T-1102	150	yes	yes
Sump 14	Old Boiler House Sump	Groundwater from old boiler house basement.	Sump at Tanks T-1101 & T-1102	-	yes	no
Sump 15	North CSI Swale Underdrain #3	Underdrain beneath invert of main northern asphalt-lined swale, north of former CSI.	Tanks T-1101 & T-1102	200	yes	no
Sump 16	Buildings 65/71 Swale/Trench Underdrain	Underdrain beneath polyurea lined swale south of Building 70	Tanks T-1101 & T-1102	250	yes	no

updated 9/13/2016

TABLE 2

**FMC MIDDLEPORT, NY
NORTH SITE COVER AREA
INSPECTION SCHEDULE**

Type of Inspection	Routine Schedule
Clay Soil Cover - Visual Inspection	Monthly
Clay Soil Cover - Documented Inspection	Semi-annually (May and October)
Asphalt and Polyurea Cover - Visual Inspection	Monthly
Asphalt and Polyurea Cover - Documented Inspection	Semi-annually (May and October)
Sump flow meter readings	Weekly
Sumps and Underdrains - Documented Inspection	Quarterly
Fenceline Inspection	Monthly
Stormwater Attenuation structures	Semi-annually (May and October)
Heat Trace Wire Integrity Testing	Annually - October
Alarm and Interlock Testing	Annually - September