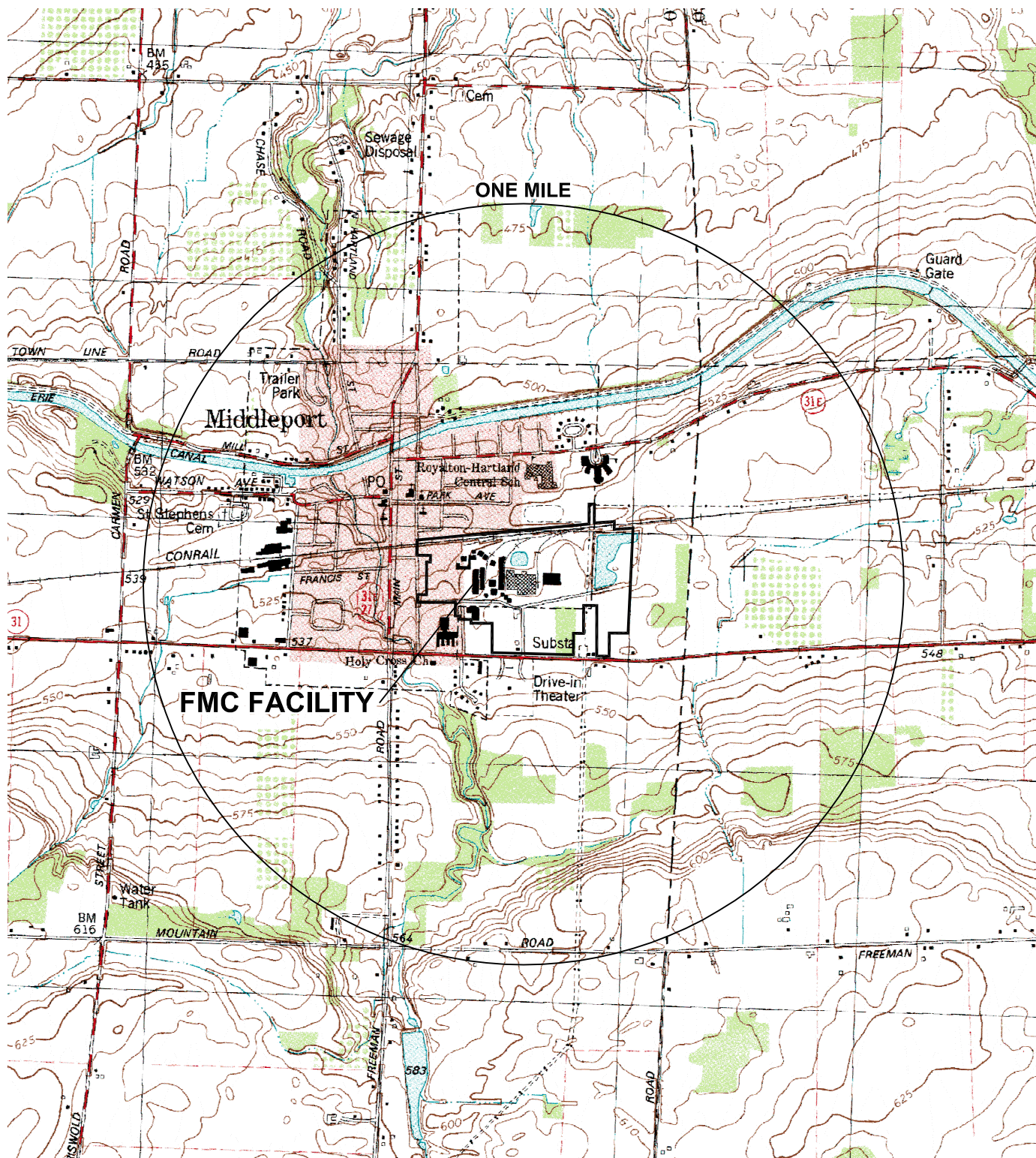
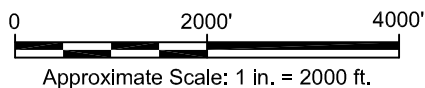


FIGURES



REFERENCE: BASE MAP USGS 7.5. MIN. TOPO. QUAD., MEDINA, NY, 2980.



FACILITY LOCATION:
 LATITUDE 43° 12' 27" N
 LONGITUDE 78° 28' 16" W

NEW YORK

THIS PRINT AND ALL INFORMATION THEREON IS THE PROPERTY OF FMC AND IS CONFIDENTIAL AND MUST NOT BE MADE PUBLIC OR COPIED UNLESS AUTHORIZED BY FMC. IT IS SUBJECT TO RETURN ON DEMAND.

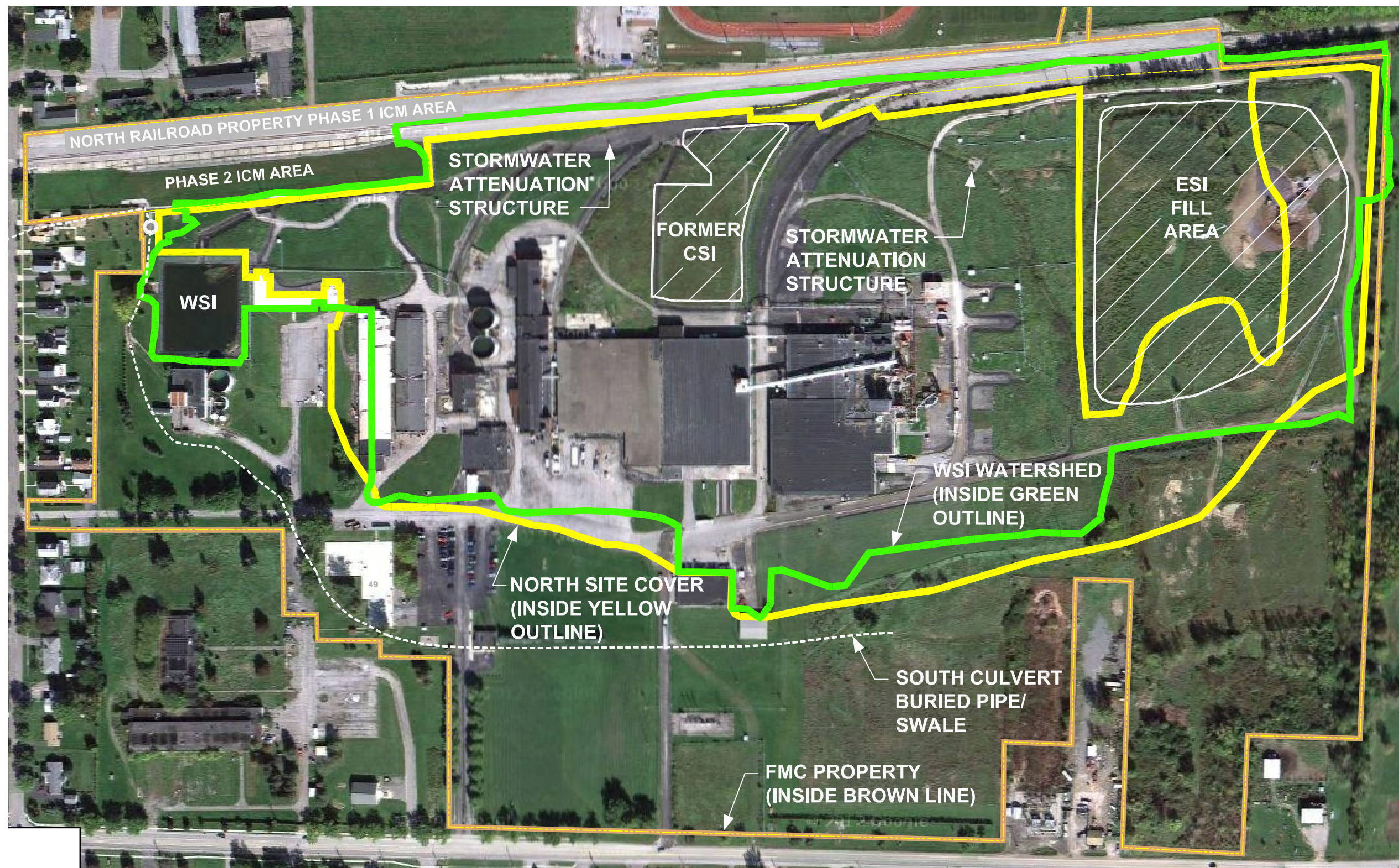
FIGURE 1-1

FMC CORPORATION—MIDDLEPORT, NEW YORK
 NORTH SITE COVER OPERATIONS & MAINTENANCE PLAN

SITE LOCATION MAP

PARSONS

40 LA RIVIERE DRIVE, SUITE 350, BUFFALO, NEW YORK 14202 PHONE: 716-541-0730



NOTES:

1. THIS FIGURE WAS PREPARED FROM A DRAWING BY CRA, ENTITLED "SURFACE CHARACTERISTICS AND SURFACE WATER DRAINAGE", FIGURE 2.6, DRAWING NO. 02788-90(055)GN-NF034, DATED JAN. 27, 1999, @ A SCALE OF 1" = 300'.
2. WATERSHED LIMITS UPDATED IN 2010 AS PART OF THE WSI HYDROLOGIC EVALUATION.
3. PHOTOGRAPH TAKEN SEPTEMBER 2011.



THIS PRINT AND ALL INFORMATION THEREON IS THE PROPERTY OF FMC AND IS CONFIDENTIAL AND MUST NOT BE MADE PUBLIC OR COPIED UNLESS AUTHORIZED BY FMC. IT IS SUBJECT TO RETURN ON DEMAND.

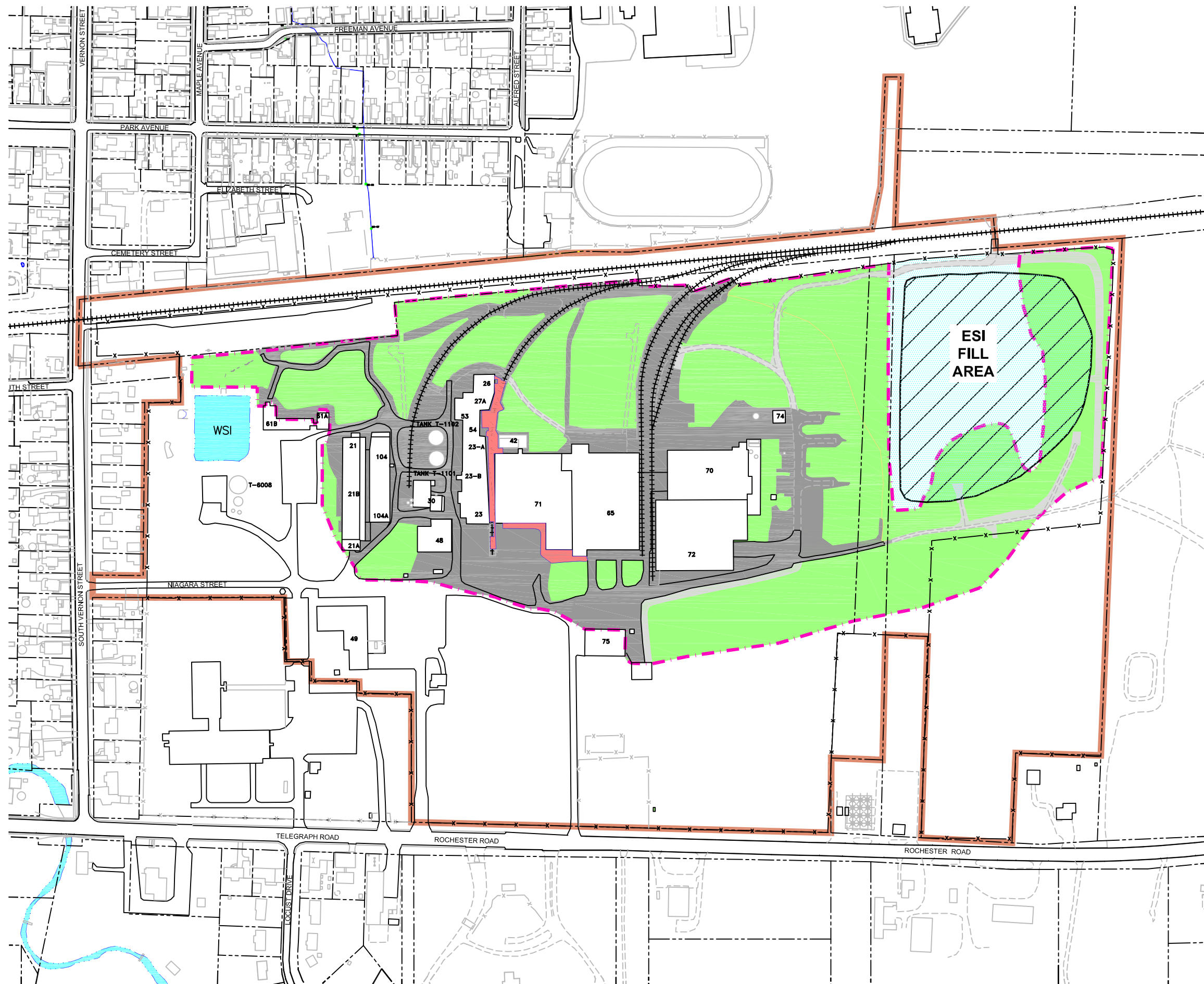
FIGURE 2

FMC CORPORATION—MIDDLEPORT, NEW YORK
NORTH SITE COVER OPERATIONS & MAINTENANCE PLAN

SITE PLAN

PARSONS

40 LA RIVIERE DRIVE, SUITE 350, BUFFALO, NEW YORK 14202 PHONE: 716-541-0730



LEGEND:

- FMC PROPERTY LINE
- x-x- PLANT FENCELINE
- - - APPROXIMATE LIMITS OF CLAY SOIL AND ASPHALT COVER
- CLAY SOIL COVER AREA
- ASPHALT COVER AREA
- POLYUREA COVER AREA
- ESI INTERIM SOIL COVER AREA
- GRAVEL ROAD OVER CLAY SOIL COVER AREA

NOTES:

1. THIS FIGURE WAS PREPARED FROM A DRAWING BY CRA, ENTITLED "SURFACE CHARACTERISTICS AND SURFACE WATER DRAINAGE", FIGURE 2.6, DRAWING NO. 02788-90(055)GN-NF034, DATED JAN. 27, 1999, @ A SCALE OF 1" = 300'.
2. PORTIONS OF THE ESI FILL AREA WAS CONSTRUCTED OVER THE CLAY SOIL COVER

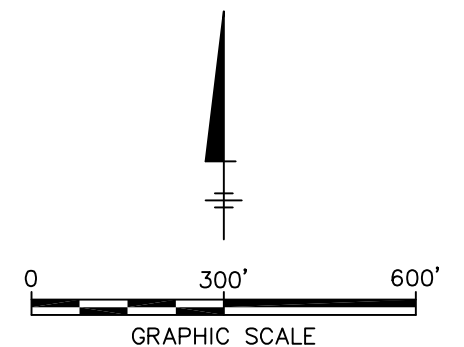


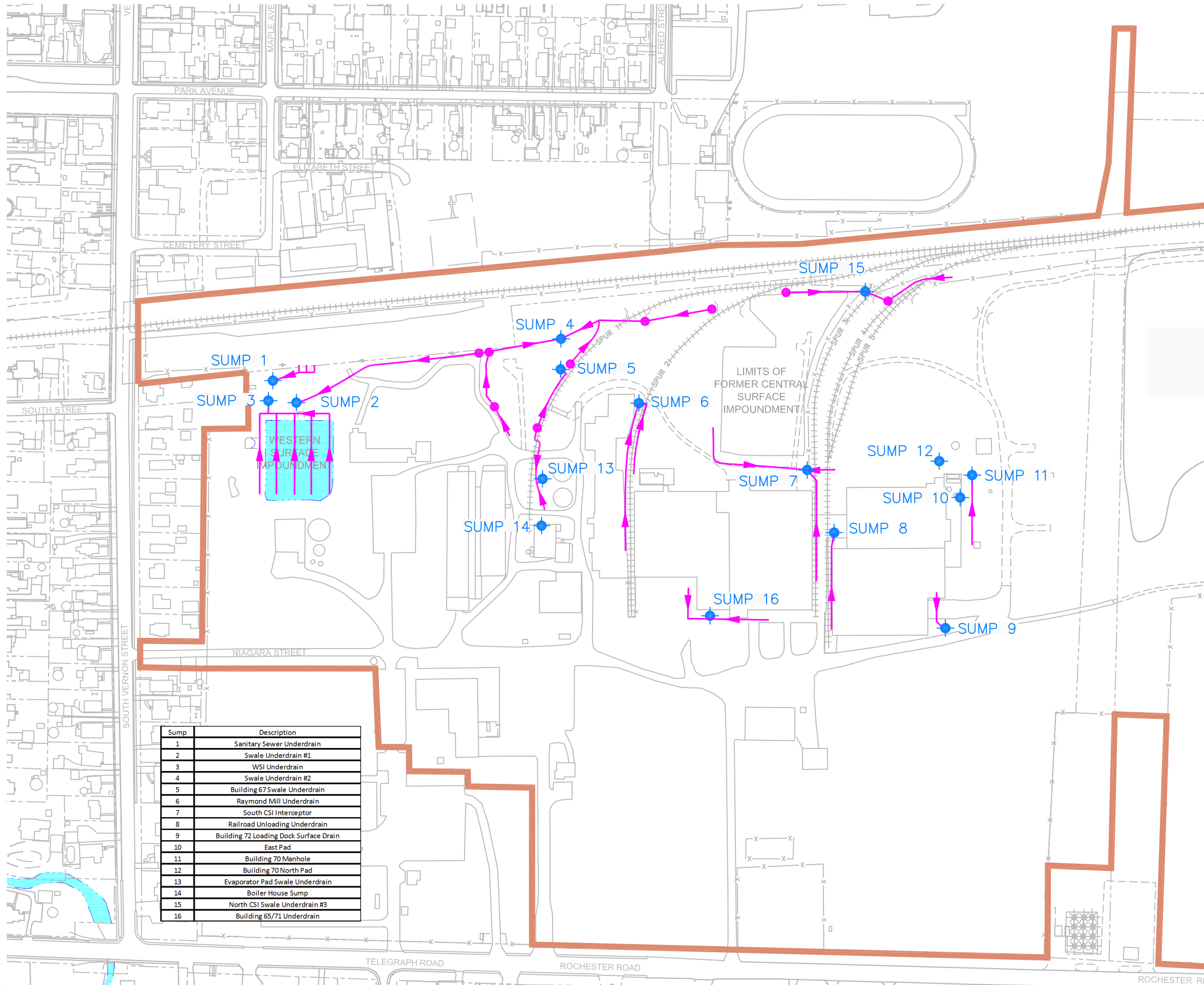
FIGURE 3

FMC CORPORATION—MIDDLEPORT, NEW YORK
NORTH SITE COVER OPERATIONS & MAINTENANCE PLAN

NORTH SITE COVER AREA

PARSONS

40 LA RIVIERE DRIVE, SUITE 350, BUFFALO, NEW YORK 14202 PHONE: 716-541-0730



LEGEND:

- FMC PROPERTY BOUNDARY (APPROXIMATE)
- APPROXIMATE LOCATION OF UNDERDRAIN AND FLOW DIRECTION
- + SUMP LOCATION
- UNDERDRAIN CLEANOUT

NOTES:

1. THIS FIGURE WAS PREPARED FROM A DRAWING BY CRA, ENTITLED "GROUNDWATER INTERCEPTOR SUMPS AND SUBDRAINS", FIGURE 5.3, DRAWING NO. 02788-90(055)GN-NF067, DATED JAN. 27, 1999, @ A SCALE OF 1" = 300'.

Sump	Description
1	Sanitary Sewer Underdrain
2	Swale Underdrain #1
3	WSI Underdrain
4	Swale Underdrain #2
5	Building 67 Swale Underdrain
6	Raymond Mill Underdrain
7	South CSI Interceptor
8	Railroad Unloading Underdrain
9	Building 72 Loading Dock Surface Drain
10	East Pad
11	Building 70 Manhole
12	Building 70 North Pad
13	Evaporator Pad Swale Underdrain
14	Boiler House Sump
15	North CSI Swale Underdrain #3
16	Building 65/71 Underdrain

FIGURE 4

NORTH SITE COVER OPERATIONS & MAINTENANCE PLAN

UNDERDRAINS AND SUMPS

PARSONS

40 LA RIVIERE DRIVE, SUITE 350, BUFFALO, NEW YORK 14202 PHONE: 716-541-0730