

Residential and Culvert 105 remedial projects completed

FMC Corporation, with oversight by the government regulatory Agencies, has completed remedial work on 10 residential properties (9 on the south side of Park and 1 on Maple Avenue), the vacant wooded lot north of the FMC plant, and on portions of Culvert 105 (including Margaret Droman Park, and between Sleeper and Mechanic Streets).



Park Avenue Block

installation was finished October 31. Property owners will schedule landscaping, pool and deck installations throughout the fall and into next spring at their convenience.

...continues on page 2

Removal of primarily surface soils on the residential properties, restoration of driveways, sidewalks, fencing, and sod

New look for Middleport's community Web site

There's a fresh new look to Middleport's community Web site, www.middleport-ny.com, online since 2003. The site is easier to navigate and full of information about Middleport's history, businesses, local organizations, churches, community events and more.

FMC sponsors the site, which also features information about the Middleport plant and its business and environmental activities so that residents can stay informed. Residents with information they would like posted on



FMC is proud to sponsor a community information site for Middleport residents that is online at www.middleport-ny.com or www.teapothollow.com.

Middleport's community Web site can e-mail it to feedback@middleport-future.com or send it to Debra Overkamp, FMC Community Liaison, 17 Vernon Street, Middleport, NY 14105.

Inside this issue:

Remedial Work Complete
pages 1-2

What's next - looking ahead to 2008
page 2

FMC CAMU walking tours on Web site
page 3

What's going on at the FMC Middleport Plant
page 5

Vintage rail cars await restoration
page 6

Let us know what you think!
Return reply comment card inside.

Community *Connection*

the community about issues related to the FMC Middleport plant, the environment and the local community.

*Call Debra Overkamp at:
735-3761
Ext. 289
with your questions, comments or concerns.*

Residential and Culvert 105 work completed

...continued from page 1

Work on the Coe property was completed November 16. The vacant lot was cleared of debris, excavated, and backfilled with clean soil. A new storm sewer and ditch extension was installed and the area was seeded and fenced. Landscaping of some trees and shrubs will take place in this fall and next spring.

The new buried storm sewer replaced open ditch area sections of Culvert 105. Manholes and sewer pipes were also cleaned. These areas were seeded and landscaped before the project was finished November 16.

Looking ahead to 2008

Phase 2 remedial work to install an engineered cover over a section of the FMC-owned railroad property on the northern border of the plant site is scheduled for 2008. This area, purchased by FMC in 2002, was capped, revegetated and fenced in 2003.

FMC will be submitting a plan to conduct a Pilot Phytoremediation Study in Middleport in 2008. Phytoremediation is a new and innovative method that uses plants to absorb arsenic in soil. Afterwards, the plants are harvested and destroyed. FMC will also be evaluating possible Early Actions along sections of Culvert 105 north of Sleeper Street.

We will keep the community informed about



Coe Property (Culvert 105)



Culvert 105 (Margaret Droman Park)

these programs in this newsletter and on Middleport's community Web site at www.middleport-ny.com. Residents can also call Debra Overkamp, FMC Community Liaison, at 735-7939 or stop by the FMC Neighborhood Office at 17 Vernon Street from 9 to 4 on Tuesdays and Thursdays for more information.

Series of safety workshops held at Middleport plant

A series of 4 Red Cross First Aid training courses were held at the Middleport plant in August and September. The sessions included Confined Space Rescue, Standard First Aid, CPR for the Professional Rescuer, and Oxygen Administration/Bloodborn Pathogens, and were taught by Harold Scribner, a certified Red Cross instructor and member of FMC Middleport's onsite Emergency Response Team.

Ed Doran, another member of the Team, conducted the plant's annual Fire Extinguisher training in October. Every employee must take the refresher course that includes hands on practice extinguishing a fire in a controlled situation.



What's going on at the FMC Middleport plant

By Dana Thompson, FMC Plant Manager



I would like to thank the many local residents who have extended me a warm welcome to Middleport. As FMC's new Plant Manager, I have had the pleasure to meet many people at our

to 500-kilogram containers. During the mixing and packaging of our products, monitoring equipment, including collection and ventilation systems, automatic shut-down controls and safety interlocks, leak prevention and containment systems, help to protect our employees, neighbors and the environment

Our neighbors were also interested to know that the Middleport plant has been very busy this year, and the forecast for heavy production volumes into 2008 continues.

Walking Tours and at the various community meetings held in Middleport this fall.

During these events, I learned that some of our neighbors are not sure what we do at the plant, so I would like to share that with you. Simply put, we mix and package products at FMC Middleport, a process we call "formulating."



Opportunities to Come And See For Yourself

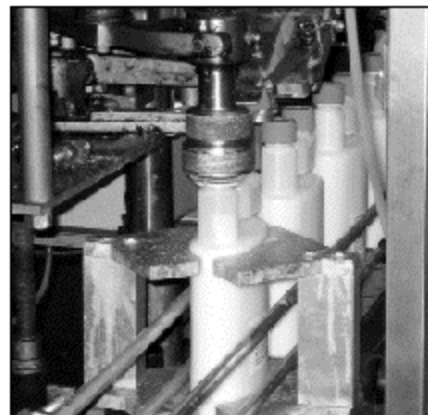
We do offer frequent plant tours and I invite anyone interested to indicate your interest and return the enclosed comment card. We will contact you about our next scheduled tour so that you can see our facilities. This coming spring, we will be hosting an Open House. Tours of FMC's mixing and packaging operations, the areas for our proposed CAMU, the new landscaping along our Rt. 31 fenceline and the onsite water treatment plant will be featured. Enhancements to our water treatment facility, that treats more than 50 million gallons of surface and groundwater annually, are currently underway.

I look forward to these opportunities to meet you and to share information about the plant and FMC's environmental programs and initiatives.

Formulations - We Mix and Package

While we have not manufactured any chemical products in Middleport since 1985, our mixing and packaging facility is one of FMC's largest formulating plants. Active ingredients required to formulate our products are shipped by rail or truck and are mixed and packaged according to strict standards and best practices.

A few key FMC product lines and a number of other smaller products are mixed and packaged in a variety of formulations. These include dustless powders, micro-encapsulated liquid and flowable liquids in different sized and shaped packaging that range from 20-gram foil packets



Dana R. Thompson

Walking tours of proposed CAMU now available

While FMC hosted two walking tours of the area(s) proposed for a Corrective Action Management Unit, or CAMU, in October, a "virtual" tour of the proposed area(s) is available online at the Middleport Community Web site at www.middleport-ny.com. The five podcasts, hosted by Brian McGinnis, FMC Remediation Project Manager, can be downloaded from the site.

There is also an easy to read Question and Answer sheet about the proposal that FMC has discussed with the Middleport Community Input Group and presented at the April and June 2007 public meetings held in Middleport.

A CAMU is an engineered land disposal unit authorized under the federal Resource Conservation and Recovery Act (RCRA) at a facility for management of remediation waste generated during environmental cleanups. This unit would be situated above-ground and would be covered and vegetated. The CAMU would provide permanent management for soils and other remediation wastes (e.g., concrete debris and vegetation) that

have been removed in performing past environmental remedial projects and would accommodate soils and wastes that are removed in future projects. FMC has proposed an expansion of an existing area at the Middleport plant where soils removed in past remedial projects have been placed and is also considering two other contiguous areas that are on the east and southeast portions of the plant site. Non-hazardous soil and debris generated in the course of remedial projects would be placed in the CAMU. No wastes from current industrial operations at the FMC plant, hazardous wastes, or wastes from any third party will be placed in the CAMU. Zoning ordinances of the Town of Royalton, where the CAMU would be situated, limit its height to 35 feet.

A copy of the virtual walking tour is also available for loan at the Middleport Free Library at 9 Vernon Street. FMC will keep the community informed in newsletters, at meetings and online at www.middleport-ny.com



We want to hear what you think! **Please return this card to us with your thoughts.**

NAME: _____
ADDRESS: _____
CITY: _____ STATE: _____ ZIP: _____
PHONE: _____
E-MAIL ADDRESS: _____

- I would like to receive further information about FMC's Middleport plant.
- Please send this newsletter to the name(s) and address(es) listed:

- I would like FMC to make a presentation to my organization.

I would be interested in:

- A tour of the FMC Middleport plant
- More information about the FMC Middleport web site.

My specific comment or question is:

- It is okay for FMC to share my comments with the NYS Departments of Environmental Conservation and Health and the US Environmental Protection Agency.

THANK YOU!



Fall Open House well attended



Realtors for each of the 15 featured homes showed the properties to visitors and registered them for the various prize drawings.

Over 300 people attended the FMC Property Price Protection's Fall "Cruise Into Middleport" progressive open house on Sat., October 27. According to Sharrie Wartell, who administers the program for FMC at the 15 Main Street office, fifteen properties for sale were featured at the tour of homes and the grand prize winner of the \$250 prize drawing was Debra Klee of Middleport. Congratulations!

Please take a moment to share your thoughts on the enclosed comment card.

Each returned comment receives a personalized follow-up response.



Topics from comment cards have covered the environment, health and safety, the future of FMC, plant operations and tour requests.

**OR E-MAIL YOUR QUESTION TO:
FEEDBACK@MIDDLEPORT-FUTURE.COM**

As of December 1, the FMC Neighborhood Office at 17 Vernon St. will be open Tuesdays and Thursdays from 9 a.m. to 4 p.m.



NO POSTAGE
NECESSARY
IF MAILED
IN THE
UNITED STATES

BUSINESS REPLY MAIL

FIRST-CLASS MAIL PERMIT NO. 1 MIDDLEPORT NY

POSTAGE WILL BE PAID BY ADDRESSEE

DANA THOMPSON, PLANT MANAGER
FMC CORPORATION
AGRICULTURAL PRODUCTS GROUP
100 NIAGARA ST
MIDDLEPORT NY 14105-9903

FMC Corporation
Agricultural Products Group
100 Niagara Street
Middleport, New York 14105

PRSRRT STD
US POSTAGE
PAID
BUFFALO, NY
Permit No. 3538

*To review documents related to environmental activities at the plant, visit the FMC repository at the Middleport Free Library
9 South Vernon Street
Middleport, NY 14105
(716) 735-3281*

Postal Customer

Vintage rail cars await restoration

Plans for use in 2008 season by Medina Railroad Museum

Passersby may have noticed the four vintage rail cars once used by the New York Central Railroad on the unused railroad tracks at the FMC plant in Middleport.

"The rail cars, a coach, Pullman, baggage and cafe/kitchen car, are from the mid-1950s and are part of the Medina Railroad Museum's expansion plans," says Marty Phelps, Director of the Medina Railroad Museum. "The cars are originals and in excellent condition."

Phelps and Linda Klein, promotional director at the Museum, contacted FMC Middleport Plant Manager Dana Thompson and asked if the museum could temporarily use some railroad tracks before the cars are restored to the 2-tone



gray color used by the New York Central Rail system and put into use in 2008.

"We are very happy to have a place for our rail cars before they are moved from FMC's tracks and then restored," says Phelps. "Use of these cars will add another 100 passengers to our present tour excursions," adds Phelps, "and we appreciate FMC's efforts."

Congratulations to Royalton-Hartland! Recognized as High Performing School



The NYS Commissioner of Education has recognized Royalton-Hartland as one of New York State's Title 1 districts that have met the criteria for designation as "high performing." According to the Commissioner, Roy-Hart met all applicable State standards for English language arts and math during the 2005-2006 school year and also made Adequate Yearly Progress in English language arts, mathematics, science and graduation rate during the 2004-2005 and 2005-2006 school years. The Commissioner's letter to

the District Superintendent states, "You and your entire community are to be commended for leading New York forward to accomplish our dual goals of increasing student achievement while closing the gap in student performance." And in the national report, "Why Rural Matters 2007," Roy-Hart is also one of 4 local rural school districts that academically outperforms comparable districts across the United States. Kudos to Roy-Hart's high performing students!