



FACT SHEET

State Superfund Program

Receive Site Fact Sheets by *Email*. See "For More Information" to Learn How.

Site Name: FMC Corporation – Roy Hart School
DEC Site #: 932014 Operable Unit 04*
Address 100 Niagara Street
Middleport, NY 14105

Have questions?
See
"Who to Contact"
Below

DEC ANNOUNCES PLAN TO BEGIN PHASE 5 SOIL REMEDIATION – NOVEMBER 2018

The final phase (Phase 5) of the soil remediation at the Royalton-Hartland (Roy-Hart) School property in Middleport, New York is scheduled to begin in November 2018. The remediation will be conducted by the New York State Department of Environmental Conservation (NYSDEC) at no cost to the Roy-Hart School District.

NYSDEC, working with the Roy-Hart Board of Education and School District, has reached an agreement for a majority of remaining remediation work to be completed between November 2018 and November 2019 while minimizing disruption of school activities. As part of the contingency plan, a minor amount of remediation work may be completed during the summer recess of 2020.

Documents related to the cleanup of this site can be found at the location(s) identified below under "Where to Find Information."

Highlights of the Upcoming Cleanup Activities

The goal of the cleanup action for the site is to achieve cleanup levels that protect public health and the environment. The Roy-Hart cleanup action for the Phase 5 work includes:

1. Excavation and removal of approximately 16,600 cubic yards of soil from the area in front of, west of, south of, and adjacent to the High School, a portion of the parking lot between the Middle School and High School, along State Route 31E north of the Middle School, High School and parking lot between the Middle School and High School, and the bus loop in front of the Middle School; excavation and removal of soil beneath the existing tennis courts; and excavation, removal, and replacement of the driveway to the west of the High School (See Figure 1).
2. Backfill and restoration of excavation areas as requested by the Roy-Hart School District.
3. Installation of temporary fencing to enclose all work areas.
4. Baseline indoor air sampling in the High School, with continued air monitoring during intrusive work.
5. Implementation of a Community Air Monitoring Plan during intrusive work.

The mobilization and installation of work area fencing south of the High School is scheduled for November 2018, while intrusive remedial work is scheduled to begin in April 2019 and continue through October 2019. Intrusive work will begin to the south of the High School and move to the areas in front of, west of, and adjacent to the School during summer recess (See Figure 1). Restoration activities will continue through November 2019. As part of the contingency plan, a

* *Operable Unit*: An administrative term used to identify a portion of a site that can be addressed by a distinct investigation and/or cleanup approach. An operable unit can receive specific investigation, and a particular remedy may be proposed.

minor amount of remediation work may be performed during the summer recess of 2020 in order to minimize impacts to the School during the 2019/2020 academic year.

NYSDEC understands it is important that the School remains open and functional during the academic year and has worked with School District to achieve this goal. Remediation activities that occur while school is in session will not begin until after 8:00 a.m. and construction vehicle traffic will be minimized for one hour during school dismissals. Daily air monitoring will be performed during work hours to ensure that areas outside of the construction area are not impacted by remedial activities.

Next Steps

NYSDEC will continue to work with the Roy-Hart Board of Education and School District to minimize the disruption to School activities caused by this work.

NYSDEC will keep the public informed throughout the cleanup of the site.

Background

FMC Corporation (FMC) owns and operates a facility due south of the School in the Village of Middleport. As a result of historic air emissions and surface discharges of process water, the facility contaminated nearby properties (including the Roy-Hart School), predominantly with arsenic.

The Roy-Hart school property was initially sampled and a partial soil removal was completed by FMC in 1996 and 1999 in the vicinity of the football field. NYSDEC performed additional soil sampling in 2014 and 2015 to more fully define the extent of arsenic contamination on the remainder of the property exceeding the 20-part-per-million (ppm) objective described in the May 2013 Final Statement of Basis (FSB). This data was used to determine the areas and volume of soil that will need to be removed.

Based on the soil sampling performed on the Roy-Hart school property by NYSDEC and FMC, arsenic contamination is at levels exceeding the 20 ppm soil cleanup objective at depths ranging from 0 to 4 feet below ground surface for the majority of the grassed areas on the property. Phases 1-4 during the 2015-2018 construction seasons resulted in the removal of approximately 35,000 cubic yards of contaminated soil from the field hockey field located in the southeastern portion of the property, the inner courtyards of the High School and areas to the southwest of the High School, the central area between the High School and Middle School, and the area east and in front of the Middle School. It is anticipated that all the remaining contaminated soil will be removed during the Phase 5 work.

State Superfund Program: New York's State Superfund Program (SSF) identifies and characterizes suspected inactive hazardous waste disposal sites. Sites that pose a significant threat to public health and/or the environment go through a process of investigation, evaluation, cleanup and monitoring.

NYSDEC attempts to identify parties responsible for site contamination and require cleanup before committing State funds.

For more information about the SSF, visit: <http://www.dec.ny.gov/chemical/8439.html>

FOR MORE INFORMATION

Where to Find Information

Project documents are available at the following location(s) to help the public stay informed.

Royalton Hartland Community Library
9 South Vernon Street
Middleport, NY 14105
Phone: 716-735-3281

Project documents are also available on the NYSDEC website at:
<http://www.dec.ny.gov/chemical/37554.htm>

Who to Contact

Comments and questions are always welcome and should be directed as follows:

Project Related Questions

Heide-Marie Dudek, P.E.
Department of Environmental Conservation
Division of Environmental Remediation
625 Broadway
Albany, NY 12233-7016
518-402-9813
heidi.dudek@dec.ny.gov

Site-Related Health Questions

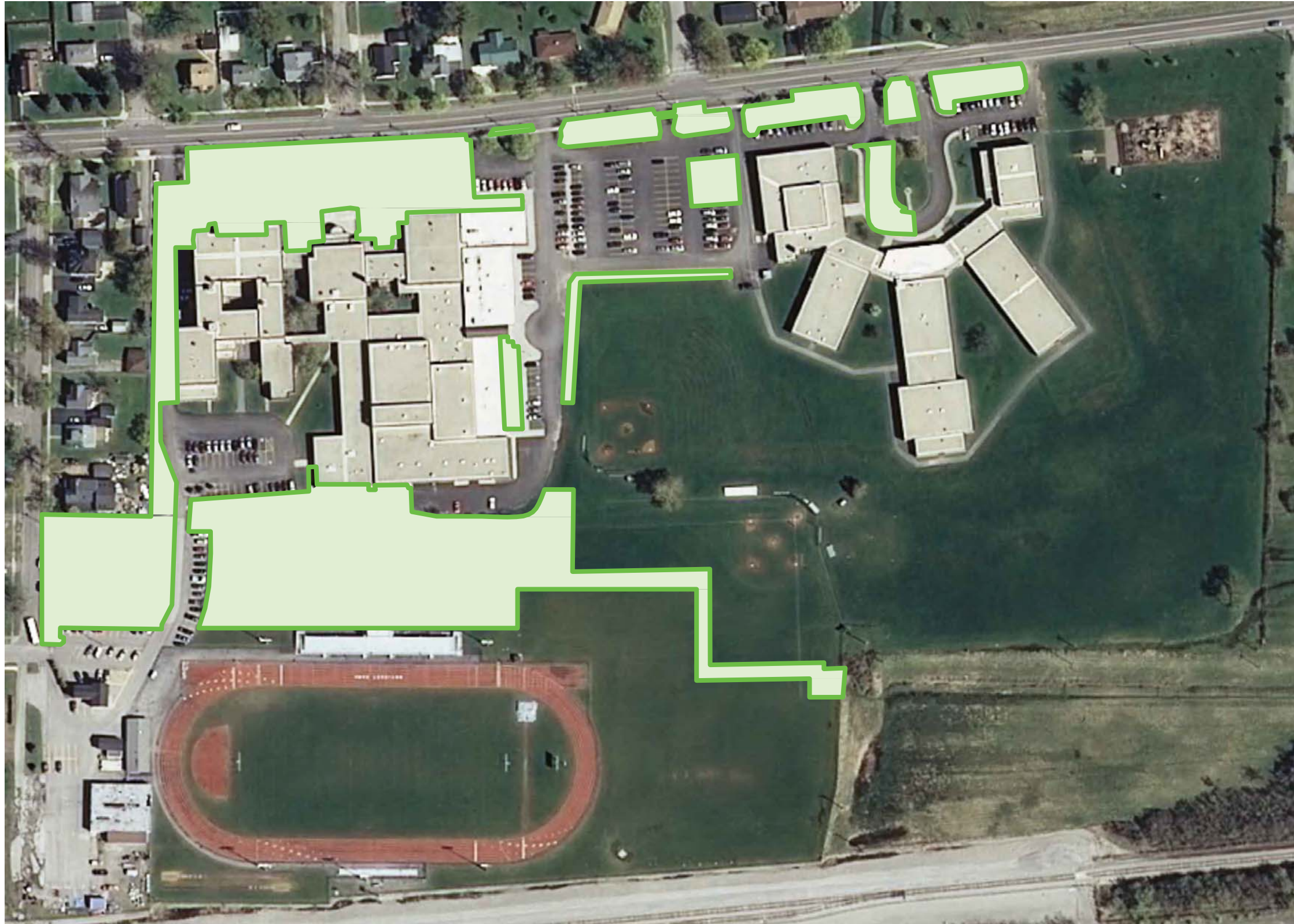
Stephanie Selmer
New York State Department of Health
Bureau of Environmental Exposure
Investigation
Corning Tower, Albany NY
518-402-7870
stephanie.selmer@health.ny.gov

We encourage you to share this fact sheet with neighbors and tenants, and/or post this fact sheet in a prominent area of your building for others to see.

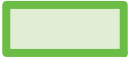
Receive Site Fact Sheets by Email

- Have site information such as this fact sheet sent right to your email inbox.
- NYSDEC invites you to sign up with one or more contaminated sites
- NYSDEC invites you to sign up with one or more contaminated sites:
- <http://www.dec.ny.gov/chemical/61092.html>. It's quick, it's free,
- and it will help keep you *better informed*.

As a listserv member, you will periodically receive site-related information/announcements for all contaminated sites in the county(ies) you select.



Legend

 APPROXIMATE EXCAVATION AREA FOR PHASE 5

1. POPLI DESIGN GROUP PROVIDED SITE SURVEY ON 4/27/15. ADJUSTMENTS TO PROPERTY LINES WERE COMPLETED AND PROVIDED WITH REVISED SITE SURVEY ON 6/19/15.
2. LARGE TRUCKS (i.e. >14,000 lbs) SHALL NOT BE PERMITTED TO TRAVEL ON THE VILLAGE OF MIDDLEPORT ROADS.
3. BACKGROUND IMAGE IS FROM NYSGIS CLEARING HOUSE (NIAGARA COUNTY, 2011).

SCALE IN FEET



Figure 1 Phase5ExcavationAreas